

Product datasheet for **TA392769S**

Cadherin 7 (CDH7) Rabbit Polyclonal Antibody

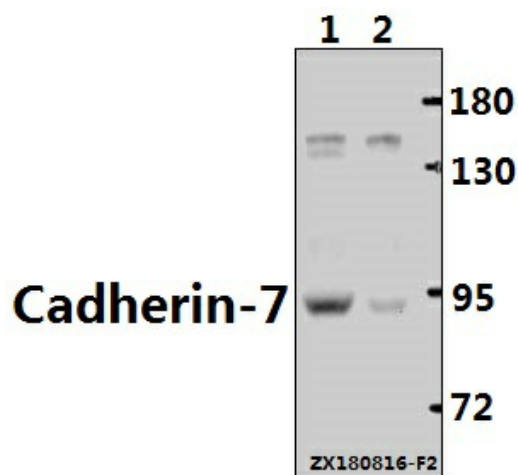
Product data:

Product Type:	Primary Antibodies
Applications:	WB
Recommended Dilution:	WB: 1:500~1:1000 IHC: 1:50~1:200
Reactivity:	Human, Mouse, Rat
Host:	Rabbit
Isotype:	IgG
Clonality:	Polyclonal
Immunogen:	Synthetic peptide, corresponding to amino acids 645-693 of Human Cadherin-7.
Specificity:	Cadherin-7 (R678) polyclonal antibody detects endogenous levels of Cadherin-7 protein.
Formulation:	Rabbit IgG, 1mg/ml in PBS with 0.02% sodium azide, 50% glycerol, pH7.2
Concentration:	1mg/ml
Conjugation:	Unconjugated
Storage:	Store at 4°C short term. Aliquot and store at -20°C long term. Avoid freeze-thaw cycles.
Stability:	1 year
Predicted Protein Size:	~ 87 kDa
Gene Name:	cadherin 7
Database Link:	Entrez Gene 1005 Human Q9ULB5
Background:	The cadherins are a family of Ca ²⁺ -dependent adhesion molecules that function to mediate cell-cell binding critical to the maintenance of structure and morphogenesis. Cadherins each contain a large extracellular domain at the N-terminus, which is characterized by a series of five homologous repeats, the most distal of which is thought to be responsible for binding specificity. Cadherin-7 is a member of the atypical type II cadherin family that lacks the HAV cell recognition sequence found in type I cadherins. Although the absence of an HAV sequence decreases cell adhesion specificity, cadherin-7 contributes to cell organization by mediating homophilic cell adhesion in the brain, testis and prostate.
Synonyms:	Cadherin-7; CDH7; CDH7L1

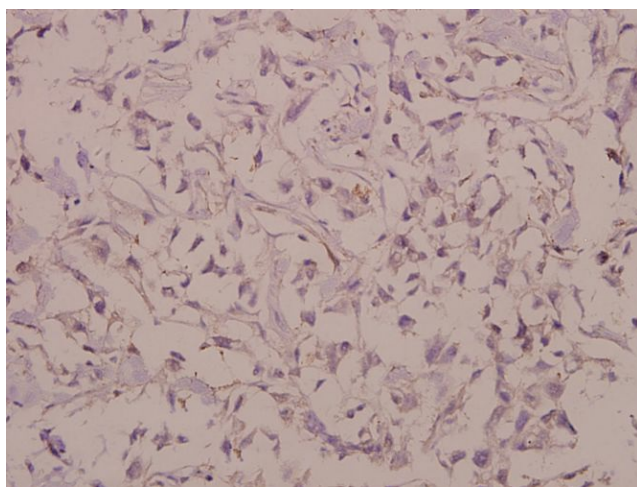
[View online »](#)

Note: For research use only, not for use in diagnostic procedure.

Product images:



Western blot (WB) analysis of Cadherin-7 (R678) pAb at 1:500 dilution Lane1:The Brain tissue lysate of Mouse(40ug) Lane2:The Brain tissue lysate of Rat(40ug)



Immunohistochemistry (IHC) analyzes of Cadherin-7 (R678) pAb in paraffin-embedded human colorectal carcinoma tissue at 1:50.