

Product datasheet for **TA392768M**

AVEN Rabbit Polyclonal Antibody

Product data:

Product Type:	Primary Antibodies
Applications:	WB
Recommended Dilution:	WB: 1:1000~1:2000
Reactivity:	Human, Mouse, Rat
Host:	Rabbit
Isotype:	IgG
Clonality:	Polyclonal
Immunogen:	Synthetic peptide, corresponding Human MYH15.
Specificity:	Aven pAb detects endogenous levels of Aven protein.
Formulation:	Rabbit IgG, 1mg/ml in PBS with 0.02% sodium azide, 50% glycerol, pH7.2
Concentration:	1mg/ml
Conjugation:	Unconjugated
Storage:	Store at 4°C short term. Aliquot and store at -20°C long term. Avoid freeze-thaw cycles.
Stability:	1 year
Predicted Protein Size:	~ 50 kDa
Gene Name:	apoptosis and caspase activation inhibitor
Database Link:	Entrez Gene 57099 Human Q9NQS1
Background:	The Bcl-2 family regulates apoptosis in response to a wide range of stimuli through control of mitochondrial cytochrome c release and caspase activation. Cytosolic Apaf-1 forms a complex with caspase-9 in the presence of cytochrome c and dATP, ultimately leading to caspase-9 activation and subsequent activation of caspase-3. A large number of proteins have been found to interact with Bcl-2 and other family members that have been shown to help regulate apoptosis. Aven was identified in a yeast two-hybrid screen as a bcl-xL interacting protein. It also interacts with other anti-apoptotic family members, including Bcl-2, but fails to interact with pro-apoptotic proteins Bax and Bak. Aven inhibits apoptosis and enhances anti-apoptotic activity of Bcl-xL. It interferes with association with Apaf-1 and activation of caspase-9. Aven overexpression is associated with poor prognosis in acute lymphoblastic leukemia.

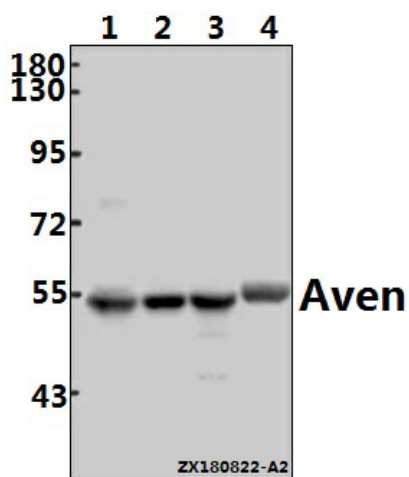


[View online »](#)

Synonyms: KIAA1000; MYH15; Myosin-15; Myosin heavy chain 15

Note: For research use only, not for use in diagnostic procedure.

Product images:



Western blot (WB) analysis of Aven (P329) pAb at 1:1000 dilution Lane1:HCT116 whole cell lysate(40ug) Lane2:L02 whole cell lysate(40ug) Lane3:The Testis tissue lysate of Mouse(40ug) Lane4:The Heart tissue lysate of Rat(40ug)