

## Product datasheet for **TA392767S**

### COX4 (COX4I1) Rabbit Polyclonal Antibody

#### Product data:

Product Type:	Primary Antibodies
Applications:	WB
Recommended Dilution:	WB: 1:500~1:1000 IHC: 1:50~1:200
Reactivity:	Human, Mouse, Rat
Host:	Rabbit
Isotype:	IgG
Clonality:	Polyclonal
Immunogen:	Synthetic peptide, corresponding to the N-terminus of Human Cox-4.
Specificity:	Cox-4 (A37) polyclonal antibody detects endogenous levels of Cox-4 protein
Formulation:	Rabbit IgG, 1mg/ml in PBS with 0.02% sodium azide, 50% glycerol, pH7.2
Concentration:	1mg/ml
Conjugation:	Unconjugated
Storage:	Store at 4°C short term. Aliquot and store at -20°C long term. Avoid freeze-thaw cycles.
Stability:	1 year
Predicted Protein Size:	~ 20 kDa
Gene Name:	cytochrome c oxidase subunit 4I1
Database Link:	<a href="#">Entrez Gene 1327 Human P13073</a>
Background:	Cytochrome c oxidase (COX) functions as the terminal oxidase of the respiratory chain that uses cytochrome c as an electron donor to drive a proton gradient across the inner mitochondrial membrane. The mammalian COX apoenzyme is a heteromer consisting of three mitochondrial encoded catalytic subunits and several nuclear gene encoded structural subunits. COX contains two iron-coordination sites and two copper-coordination sites. Cytochrome c oxidase IV (COX4) is a nuclear-encoded subunit of COX that may play a role in regulating COX activity. COX4 is expressed ubiquitously in adult human tissue with the strongest levels of expression in the pancreas and moderate expression levels in heart, skeletal muscle and placenta.

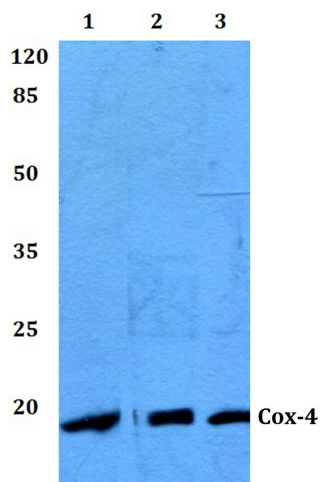


[View online »](#)

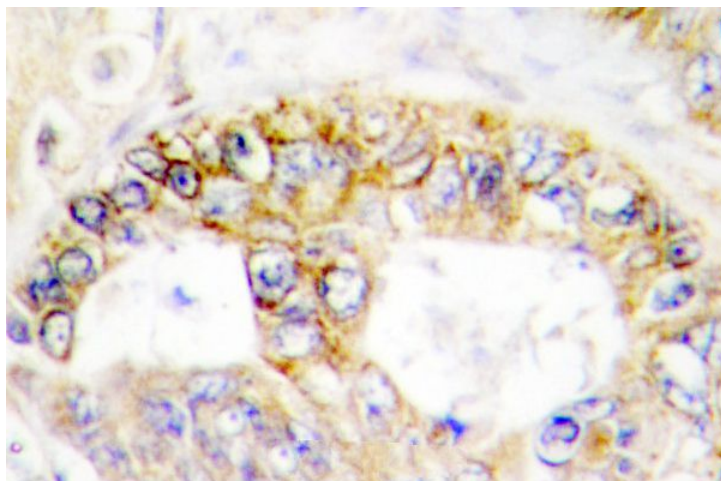
**Synonyms:** COX4; COX4I1; COX IV-1; Cytochrome c oxidase polypeptide IV; Cytochrome c oxidase subunit 4 isoform 1, mitochondrial; Cytochrome c oxidase subunit IV isoform 1

**Note:** For research use only, not for use in diagnostic procedure.

**Product images:**



Western blot (WB) analysis of Cox-4 (A37) polyclonal antibody at 1:500 dilution Lane1:K562 whole cell lysate(40ug) Lane2:HepG2 whole cell lysate(40ug) Lane3:HEK293T whole cell lysate(40ug) Lane4:LO2 whole cell lysate(40ug) Lane5:A549 whole cell lysate(40ug) Lane6:C6 whole cell lysate(40ug) Lane7:AML-12 whole cell lysate(40ug)



Immunohistochemistry (IHC) analyzes of Cox-4 (A37) pAb in paraffin-embedded human colon carcinoma tissue.