

Product datasheet for **TA392766**

TAF6L Rabbit Polyclonal Antibody

Product data:

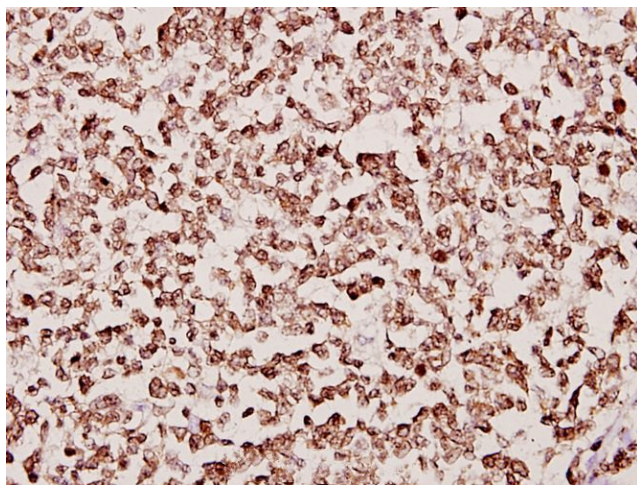
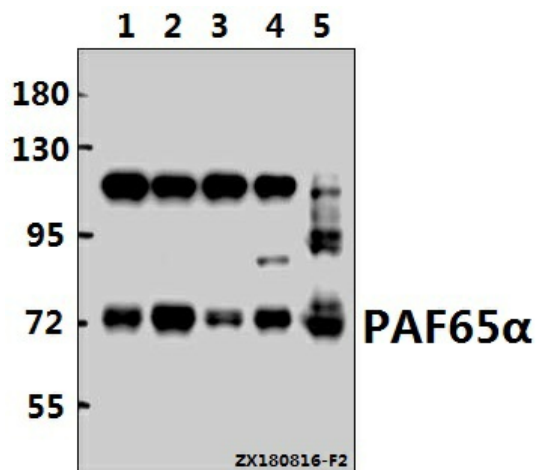
Product Type:	Primary Antibodies
Applications:	WB
Recommended Dilution:	WB: 1:500~1:1000 IHC: 1:50~1:200
Reactivity:	Human, Mouse
Host:	Rabbit
Isotype:	IgG
Clonality:	Polyclonal
Immunogen:	Synthetic peptide, corresponding to amino acids 20-70 of Human PAF65 α .
Specificity:	PAF65 α (Q53) polyclonal antibody detects endogenous levels of PAF65 α protein.
Formulation:	Rabbit IgG, 1mg/ml in PBS with 0.02% sodium azide, 50% glycerol, pH7.2
Concentration:	1mg/ml
Conjugation:	Unconjugated
Storage:	Store at 4°C short term. Aliquot and store at -20°C long term. Avoid freeze-thaw cycles.
Stability:	1 year
Predicted Protein Size:	~ 68 kDa
Gene Name:	TATA-box binding protein associated factor 6 like
Database Link:	Entrez Gene 10629 Human Q9Y6J9
Background:	In eukaryotic systems, the process of initiating transcription from protein-coding genes requires the presence of RNA polymerase II and a broad family of auxiliary transcription factors. TFIID is a general transcription factor that initiates preinitiation complex assembly through direct interaction with the TATA promoter element. Functioning as a multisubunit complex consisting of a small TATA-binding polypeptide and other TBP-associated factors (TAFs), TFIID mediates promoter responses to various transcriptional activators and repressors. TAF6L, also known as PAF65A, is a 622 amino acid nuclear protein that functions as part of the PCAF (p300/CBP-associated factor) histone acetylase complex.
Synonyms:	PAF65-alpha; PAF65A; PCAF-associated factor 65-alpha; TAF6-like RNA polymerase II p300/CBP-associated factor-associated factor 65 kDa subunit 6L; TAF6L



[View online »](#)

Note: For research use only, not for use in diagnostic procedure.

Product images:



Western blot (WB) analysis of PAF65 α (Q53) Antibody at 1:1000 dilution Lane 1: HepG2 whole cell lysate(10ug) Lane 2: HEK293T whole cell lysate(10ug) Lane 3: A549 whole cell lysate(10ug) Lane 4: EC9706 whole cell lysate(10ug) Lane 5: The Lung tissue lysate of Mouse(40ug)

Immunohistochemistry (IHC) analyzes of PAF65 α (Q53) pAb in paraffin-embedded human tonsil cancer tissue at 1:50.