

## Product datasheet for **TA392765M**

### ERGIC3 Rabbit Polyclonal Antibody

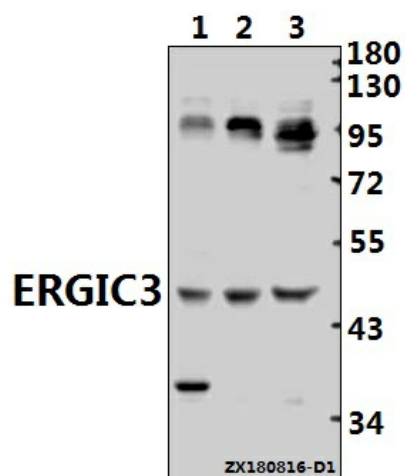
#### Product data:

Product Type:	Primary Antibodies
Applications:	WB
Recommended Dilution:	WB: 1:500~1:1000
Reactivity:	Human
Host:	Rabbit
Isotype:	IgG
Clonality:	Polyclonal
Immunogen:	Synthetic peptide, corresponding to amino acids 302-362 of Human ERGIC3.
Specificity:	ERGIC3 (V332) pAb detects endogenous levels of ERGIC3 protein.
Formulation:	Rabbit IgG, 1mg/ml in PBS with 0.02% sodium azide, 50% glycerol, pH7.2
Concentration:	1mg/ml
Conjugation:	Unconjugated
Storage:	Store at 4°C short term. Aliquot and store at -20°C long term. Avoid freeze-thaw cycles.
Stability:	1 year
Predicted Protein Size:	~ 43 kDa
Gene Name:	ERGIC and golgi 3
Database Link:	<a href="#">Entrez Gene 51614 Human Q9Y282</a>
Background:	Endoplasmic reticulum-Golgi intermediate compartment protein 3, possible role in transport between endoplasmic reticulum and Golgi.
Synonyms:	C20orf47; CGI-54; Endoplasmic reticulum-Golgi intermediate compartment protein 3; ERGIC3; ERV46; PRO0989; SDBCAG84; Serologically defined breast cancer antigen NY-BR-84
Note:	For research use only, not for use in diagnostic procedure.



[View online »](#)

Product images:



Western blot (WB) analysis of ERGIC3 (V332) pAb at 1:500 dilution Lane1:A549 whole cell lysate(40ug) Lane2:MCF-7 whole cell lysate(40ug) Lane3:Myla2059 whole cell lysate(40ug)