

Product datasheet for **TA392764M**

CNOT7 Rabbit Polyclonal Antibody

Product data:

Product Type:	Primary Antibodies
Applications:	WB
Recommended Dilution:	WB: 1:500~1:1000
Reactivity:	Human, Mouse, Rat
Host:	Rabbit
Isotype:	IgG
Clonality:	Polyclonal
Immunogen:	Synthetic peptide, corresponding to amino acids 10-54 of Human CNOT7
Specificity:	CNOT7 (N19) polyclonal antibody detects endogenous levels of CNOT7 protein.
Formulation:	Rabbit IgG, 1mg/ml in PBS with 0.02% sodium azide, 50% glycerol, pH7.2
Concentration:	1mg/ml
Conjugation:	Unconjugated
Storage:	Store at 4°C short term. Aliquot and store at -20°C long term. Avoid freeze-thaw cycles.
Stability:	1 year
Predicted Protein Size:	~ 32 kDa
Gene Name:	CCR4-NOT transcription complex subunit 7
Database Link:	Entrez Gene 29883 Human Q9UIV1



[View online »](#)

Background:

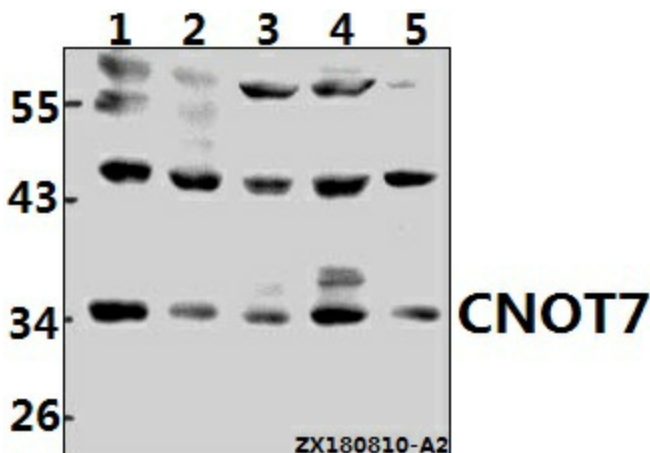
CNOT7 (CCR4-NOT transcription complex, subunit 7), also known as CAF1 (CCR4-associated factor 1), hCAF-1 or BTG1-binding factor 1, is a member of the CAF1 family. Localizing to the nucleus, CNOT7 is ubiquitously expressed and is believed to function as a transcription factor, playing a role in a wide variety of processes. CNOT7 functions as a component of the evolutionarily conserved CCR4-NOT complex, a multi-subunit complex that participates in transcription as well as mRNA degradation. CNOT7 and other subunits of the CCR4-NOT complex play a role in the regulation of nuclear hormone receptor activities. CNOT7 directly binds to and interacts with RXR β , TOB1, TOB2, BTG1, BTG2 and BTG3. In addition, CNOT7 knockout mice are sterile and show an increase in bone mass, suggesting an important role for CNOT7 in spermatogenesis and as a suppressor of bone mass and BMP (bone morphogenetic protein) actions in osteoblasts.

Synonyms:

BTG1-binding factor 1; CAF-1; Caf1a; CCR4-associated factor 1; CCR4-NOT transcription complex subunit 7

Note:

For research use only, not for use in diagnostic procedure.

Product images:


Western blot (WB) analysis of CNOT7 (N19) Antibody at 1:1000 dilution Lane1:Myla2059 whole cell lysate(40ug) Lane2:HEK293T whole cell lysate(40ug) Lane3:Hela whole cell lysate(40ug) Lane4:PC12 whole cell lysate(40ug) Lane5:3T3-L1 whole cell lysate(40ug)