

Product datasheet for **TA392763M**

DNA Polymerase lambda (POLL) Rabbit Polyclonal Antibody

Product data:

Product Type:	Primary Antibodies
Applications:	WB
Recommended Dilution:	WB: 1:500~1:1000
Reactivity:	Human, Rat
Host:	Rabbit
Isotype:	IgG
Clonality:	Polyclonal
Immunogen:	Synthetic peptide, corresponding to amino acids 448-508 of Human DNA pol λ .
Specificity:	DNA pol λ (R478) pAb detects endogenous levels of DNA pol λ protein.
Formulation:	Rabbit IgG, 1mg/ml in PBS with 0.02% sodium azide, 50% glycerol, pH7.2
Concentration:	1mg/ml
Conjugation:	Unconjugated
Storage:	Store at 4°C short term. Aliquot and store at -20°C long term. Avoid freeze-thaw cycles.
Stability:	1 year
Predicted Protein Size:	~ 64 kDa
Gene Name:	polymerase (DNA) lambda
Database Link:	Entrez Gene 27343 Human Q9UGP5



[View online »](#)

Background:

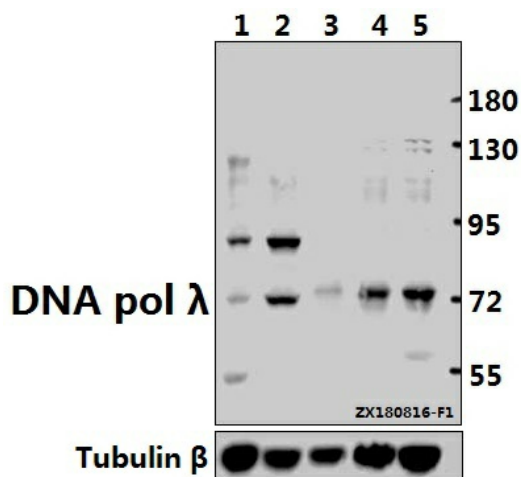
DNA replication, recombination and repair, all of which are necessary for genomic stability, require the presence of exonucleases. In DNA replication, these enzymes are involved in the processing of Okazaki fragments, whereas in DNA repair, they function to excise damaged DNA fragments and correct recombinational mismatches. These exonucleases include the family of DNA polymerases. DNA pol α , β , δ , and ϵ are involved in DNA replication and repair. DNA pol δ and DNA pol ϵ are multisubunit enzymes, with DNA pol δ consisting of two subunits: p125, which interacts with the sliding DNA clamp protein PCNA; and p50. The nuclear-encoded DNA pol γ is the only DNA polymerase required for the replication of the mitochondrial DNA. DNA pol ζ is ubiquitously expressed in various tissues and mediates the cellular mechanism of damage induced mutagenesis. DNA pol θ is a DNA polymerasehelicase that binds ATP and is involved in the repair of interstrand crosslinks.

Synonyms:

DNA polymerase beta-2; DNA polymerase kappa; DNA polymerase lambda; Pol beta2; POLL; Pol Lambda

Note:

For research use only, not for use in diagnostic procedure.

Product images:


Western blot (WB) analysis of DNA pol λ (R478) pAb at 1:500 dilution Lane1:C6 whole cell lysate(40ug) Lane2:Hela whole cell lysate(40ug) Lane3:PC3 whole cell lysate(40ug) Lane4:A549 whole cell lysate(40ug) Lane5:A2780 whole cell lysate(40ug)