

## Product datasheet for **TA392762**

### RB associated KRAB repressor (RBAK) Rabbit Polyclonal Antibody

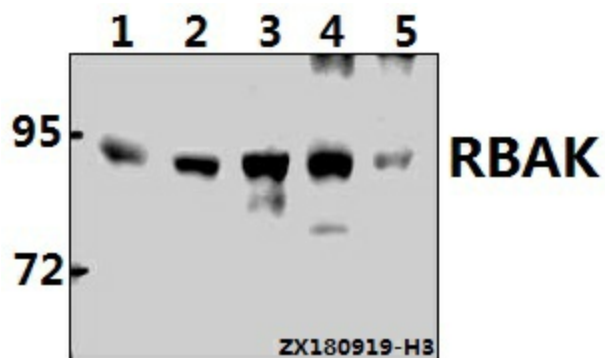
#### Product data:

Product Type:	Primary Antibodies
Applications:	WB
Recommended Dilution:	WB: 1:500~1:1000
Reactivity:	Human, Mouse, Rat
Host:	Rabbit
Isotype:	IgG
Clonality:	Polyclonal
Immunogen:	Synthetic peptide, corresponding to amino acids 10-70 of Human RBAK.
Specificity:	RBAK (W22) polyclonal antibody detects endogenous levels of RBAK protein.
Formulation:	Rabbit IgG, 1mg/ml in PBS with 0.02% sodium azide, 50% glycerol, pH7.2
Concentration:	1mg/ml
Conjugation:	Unconjugated
Storage:	Store at 4°C short term. Aliquot and store at -20°C long term. Avoid freeze-thaw cycles.
Stability:	1 year
Predicted Protein Size:	~ 83 kDa
Gene Name:	RB associated KRAB zinc finger
Database Link:	<a href="#">Entrez Gene 57786 Human Q9NYW8</a>
Background:	RB-associated KRAB zinc finger protein, may repress E2F-dependent transcription. May promote AR-dependent transcription.
Synonyms:	hRBAK; RB-associated KRAB repressor; RB-associated KRAB zinc finger protein; RBAK; Zinc finger protein 769; ZNF769
Note:	For research use only, not for use in diagnostic procedure.



[View online »](#)

## Product images:



Western blot (WB) analysis of RBAK (W22) polyclonal antibody at 1:500 dilution Lane1:L02 whole cell lysate(40ug) Lane2:H1792 whole cell lysate(40ug) Lane3:HEK293T whole cell lysate(40ug) Lane4:PC12 whole cell lysate(40ug) Lane5:AML-12 whole cell lysate(40ug)