

## Product datasheet for **TA392761M**

### SLK Rabbit Polyclonal Antibody

#### Product data:

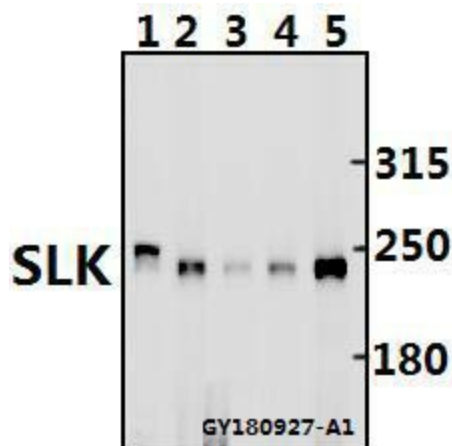
Product Type:	Primary Antibodies
Applications:	WB
Recommended Dilution:	WB: 1:500~1:1000
Reactivity:	Human, Mouse, Rat
Host:	Rabbit
Isotype:	IgG
Clonality:	Polyclonal
Immunogen:	Synthetic peptide, corresponding Human SLK.
Specificity:	SLK polyclonal antibody detects endogenous levels of SLK protein.
Formulation:	Rabbit IgG, 1mg/ml in PBS with 0.02% sodium azide, 50% glycerol, pH7.2
Concentration:	1mg/ml
Conjugation:	Unconjugated
Storage:	Store at 4°C short term. Aliquot and store at -20°C long term. Avoid freeze-thaw cycles.
Stability:	1 year
Predicted Protein Size:	~ 220 kDa
Gene Name:	STE20 like kinase
Database Link:	<a href="#">Entrez Gene 9748 Human Q9H2G2</a>
Background:	SLK (Ste20-like kinase), also known as STK2 (serine/threonine protein kinase 2) or se20-9, is a member of the serine/threonine kinase subfamily, Ste20. This subfamily is comprised of several mammalian kinases which exhibit sequence similarity to the <i>Saccharomyces cerevisiae</i> serine/threonine kinase Ste20, a protein involved in relaying signals from G protein-coupled receptors to cytosolic MAP kinase cascades. Members of this subfamily include KHS, GLK, YSK1, HPK1, Krs-1, Krs-2, GC kinase, HGK and SLK. SLK is a ubiquitously expressed protein that localizes to the cytoplasm and contains an N-terminal protein kinase domain, a central coiled-coil domain and a C-terminal ATH domain. SLK is activated through cleavage by caspase-3. SLK indirectly associates with microtubules and plays an important role in cellular stress, cell motility, cell death and cytoskeletal dynamics.


[View online »](#)

**Synonyms:** CTCL tumor antigen se20-9; hSLK; KIAA0204; Serine/threonine-protein kinase 2; SLK; STE20-like kinase; STE20-like serine/threonine-protein kinase; STE20-related kinase; STE20-related serine/threonine-protein kinase; STK2

**Note:** For research use only, not for use in diagnostic procedure.

**Product images:**



Western blot (WB) analysis of SLK polyclonal antibody at 1:500 dilution Lane1:HCT116 whole cell lysate(40ug) Lane2:THP-1 whole cell lysate(20ug) Lane3:The Heart tissue lysate of Rat(40ug) Lane4:The Heart tissue lysate of Mouse(40ug) Lane5:LOVO whole cell lysate(20ug)