

## Product datasheet for **TA392760M**

### SMG7 Rabbit Polyclonal Antibody

#### Product data:

Product Type:	Primary Antibodies
Applications:	WB
Recommended Dilution:	WB: 1:500~1:1000 IHC: 1:50~1:200
Reactivity:	Human
Host:	Rabbit
Isotype:	IgG
Clonality:	Polyclonal
Immunogen:	Synthetic peptide, corresponding to amino acids 512-564 of Human SMG7.
Specificity:	SMG7 (K548) polyclonal antibody detects endogenous levels of SMG7 protein.
Formulation:	Rabbit IgG, 1mg/ml in PBS with 0.02% sodium azide, 50% glycerol, pH7.2
Concentration:	1mg/ml
Conjugation:	Unconjugated
Storage:	Store at 4°C short term. Aliquot and store at -20°C long term. Avoid freeze-thaw cycles.
Stability:	1 year
Predicted Protein Size:	~ 127 kDa
Gene Name:	SMG7, nonsense mediated mRNA decay factor
Database Link:	<a href="#">Entrez Gene 9887 Human Q92540</a>

**Background:** In humans, NMD depends on RNA-dependent ATPase and 5' to 3' helicase UPF1, plus six other proteins designated SMG1, SMG5, SMG6, SMG7, UPF2 and UPF3. SMG5, SMG7 and UPF1 localize to cytoplasmic foci called P-bodies, while SMG5, SMG6 and SMG7 target UPF1 for dephosphorylation. SMG7 may also act as an adaptor in targeting mRNAs associated with phosphorylated UPF1 for degradation. SMG7 provides a link between the NMD pathway and mRNA degradation machinery by forming a complex with the proteins SMG5 and UPF1, interacting with them via its N-terminal domain, and targeting bound reporter transcripts for decay via its C-terminal domain. SMG7 contains a 14-3-3-like domain, and residues that bind phosphoserine-containing peptides in 14-3-3 proteins are conserved at the equivalent positions in SMG7.

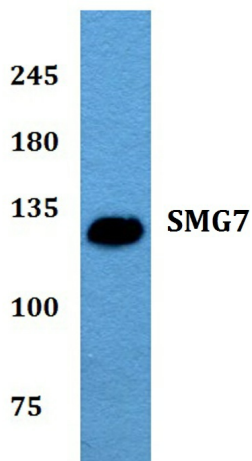


[View online »](#)

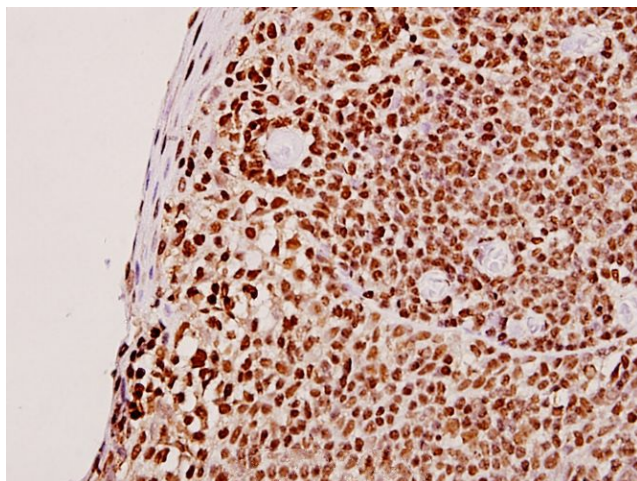
**Synonyms:** C1orf16; EST1 like protein C; EST1 telomerase component homolog C; EST1C; ever shorter telomeres 1C; FLJ23717; SGA56M; SMG 7

**Note:** For research use only, not for use in diagnostic procedure.

**Product images:**



Western blot (WB) analysis of SMG7 (K548) pAb at 1:500 dilution Lane1:K562 whole cell lysate(40ug) Lane2:MCF-7 whole cell lysate(40ug) Lane3:U-87MG whole cell lysate(40ug) Lane4:SGC7901 whole cell lysate(40ug) Lane5:PC12 whole cell lysate(40ug) Lane6:BV2 whole cell lysate(40ug)



Immunohistochemistry (IHC) analyzes of SMG7 (K548) pAb in paraffin-embedded human tonsil cancer tissue at 1:50.