

## Product datasheet for **TA392759M**

### **PARD3 Rabbit Polyclonal Antibody**

#### **Product data:**

Product Type:	Primary Antibodies
Applications:	WB
Recommended Dilution:	WB: 1:500~1:1000
Reactivity:	Human, Mouse, Rat
Host:	Rabbit
Isotype:	IgG
Clonality:	Polyclonal
Immunogen:	Synthetic peptide, corresponding to amino acids 1131-1191 of Human PARD3.
Specificity:	PARD3 (F1161) polyclonal antibody detects endogenous levels of PARD3 protein.
Formulation:	Rabbit IgG, 1mg/ml in PBS with 0.02% sodium azide, 50% glycerol, pH7.2
Concentration:	1mg/ml
Conjugation:	Unconjugated
Storage:	Store at 4°C short term. Aliquot and store at -20°C long term. Avoid freeze-thaw cycles.
Stability:	1 year
Predicted Protein Size:	~ 181 kDa
Gene Name:	par-3 family cell polarity regulator
Database Link:	<a href="#">Entrez Gene 56288 Human Q8TEW0</a>



[View online »](#)

**Background:**

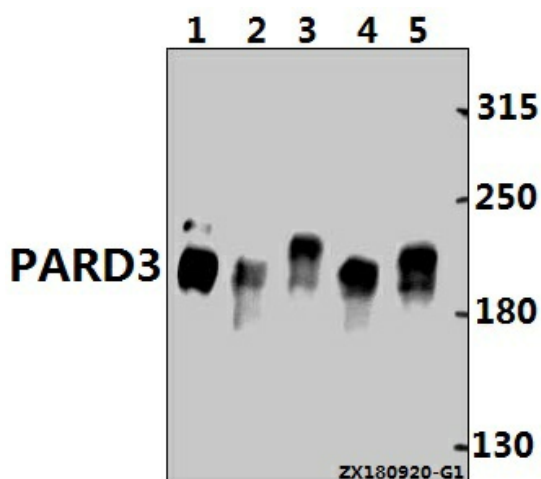
Cellular asymmetry is critical for the development of multicellular organisms. PARD (partitioning-defective) proteins play important roles in asymmetric cell division and polarized growth. PARD3A (partitioning-defective 3), also known as Baz, ASIP (atypical PKC isotype-specific-interacting protein), PAR3, PARD3, PAR3 $\alpha$ , Bazooka, SE2-5T2, SE2-5L16 or SE2-5LT1, is a 1,356 amino acid protein that contains three PDZ domains and belongs to the PAR3 family of proteins. Expressed in a wide variety of tissues, PARD3A colocalizes with PARD6A/B and PKC  $\zeta$  at epithelial tight junctions and is believed to function as an adapter protein with an important role in the formation of normal tight junctions at epithelial cell-cell contacts. Due to alternative splicing events, PARD3A exists in at least ten isoforms, namely isoform A, isoform B, isoform C, isoform D, isoform E, isoform F, isoform Lb, isoform Sa, isoform Sb and isoform 10.

**Synonyms:**

ASIP; Atypical PKC isotype-specific-interacting protein; CTCL tumor antigen se2-5; PAR-3; PAR3; PAR3-alpha; PAR3A; PARD-3; PARD3; Partitioning defective 3 homolog

**Note:**

For research use only, not for use in diagnostic procedure.

**Product images:**


Western blot (WB) analysis of PARD3 (F1161) polyclonal antibody at 1:500 dilution Lane1:CT26 whole cell lysate(40ug) Lane2:PC12 whole cell lysate(40ug) Lane3:HEK293T whole cell lysate(40ug) Lane4:Hela whole cell lysate(40ug) Lane5:H1792 whole cell lysate(40ug)