

Product datasheet for **TA392758S**

ADCK3 (COQ8A) Rabbit Polyclonal Antibody

Product data:

Product Type:	Primary Antibodies
Applications:	WB
Recommended Dilution:	WB: 1:500~1:1000
Reactivity:	Human, Mouse, Rat
Host:	Rabbit
Isotype:	IgG
Clonality:	Polyclonal
Immunogen:	Synthetic peptide, corresponding to amino acids 293-353 of Human ADCK3.
Specificity:	ADCK3 (N323) polyclonal antibody detects endogenous levels of ADCK3 protein.
Formulation:	Rabbit IgG, 1mg/ml in PBS with 0.02% sodium azide, 50% glycerol, pH7.2
Concentration:	1mg/ml
Conjugation:	Unconjugated
Storage:	Store at 4°C short term. Aliquot and store at -20°C long term. Avoid freeze-thaw cycles.
Stability:	1 year
Predicted Protein Size:	~ 72 kDa
Gene Name:	aarF domain containing kinase 3
Database Link:	Entrez Gene 56997 Human Q8NI60
Background:	CABC1 (chaperone activity of bc1 complex-like), also known as COQ8 or ADCK3 (aarF domain-containing protein kinase 3) is a 647 amino acid mitochondrial protein that belongs to the protein kinase superfamily. Ubiquitously expressed with higher expression in heart and skeletal muscle, CABC1 is thought to function as a chaperone in the proper assembly of protein complexes found in the respiratory chain. CABC1 expression is induced both in response to DNA damage and by the tumor suppressor p53. When CABC1 expression is inhibited, p53-induced apoptosis is partially suppressed, suggesting a possible role for CABC1 in tumor suppression. Mutations in the gene encoding CABC1 may be implicated in ubiquinone deficiency, which can lead to cerebellar ataxia and seizures. Four isoforms of CABC1 exist due to alternative splicing events.

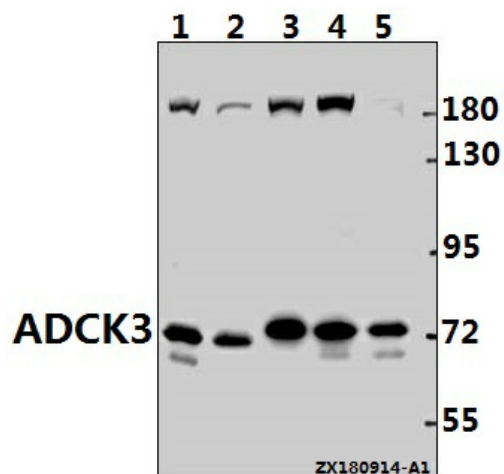


[View online »](#)

Synonyms: aarF domain-containing protein kinase 3; ADCK3; Atypical kinase COQ8A, mitochondrial; CAB1; Chaperone-ABC1-like; Chaperone activity of bc1 complex-like; Coenzyme Q protein 8A; COQ8A; PP265

Note: For research use only, not for use in diagnostic procedure.

Product images:



Western blot (WB) analysis of ADCK3 (N323) polyclonal antibody at 1:500 dilution Lane1:CT26 whole cell lysate(40ug) Lane2:H9C2 whole cell lysate(40ug) Lane3:EC9706 whole cell lysate(40ug) Lane4:A2780 whole cell lysate(40ug) Lane5:Panc1 whole cell lysate(40ug)