

Product datasheet for **TA392757S**

SFXN4 Rabbit Polyclonal Antibody

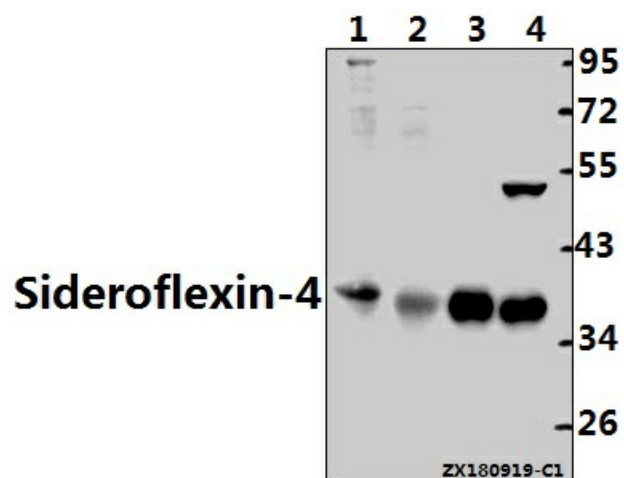
Product data:

Product Type:	Primary Antibodies
Applications:	WB
Recommended Dilution:	WB: 1:500~1:1000
Reactivity:	Human
Host:	Rabbit
Isotype:	IgG
Clonality:	Polyclonal
Immunogen:	Synthetic peptide, corresponding to amino acids 5-75 of Human Sideroflexin-4.
Specificity:	Sideroflexin-4 (G12) polyclonal antibody detects endogenous levels of Sideroflexin-4 protein.
Formulation:	Rabbit IgG, 1mg/ml in PBS with 0.02% sodium azide, 50% glycerol, pH7.2
Concentration:	1mg/ml
Conjugation:	Unconjugated
Storage:	Store at 4°C short term. Aliquot and store at -20°C long term. Avoid freeze-thaw cycles.
Stability:	1 year
Predicted Protein Size:	~ 38 kDa
Gene Name:	sideroflexin 4
Database Link:	Entrez Gene 119559 Human Q6P4A7
Background:	Sideroflexin-4, potential iron transporter. SFXN4 is an uncharacterized mitochondrial protein that localizes to the mitochondrial inner membrane. Modulation of SFXN4 alters mitochondrial respiration by affecting iron-sulfur cluster biogenesis. SFXN4 may be a potential druggable target in ovarian cancer.
Synonyms:	BCRM1; Breast cancer resistance marker 1; SFXN4; Sideroflexin-4
Note:	For research use only, not for use in diagnostic procedure.



[View online »](#)

Product images:



Western blot (WB) analysis of Sideroflexin-4 (G12) polyclonal antibody at 1:1000 dilution
Lane1:HCT116 whole cell lysate(40ug)
Lane2:HepG2 whole cell lysate(40ug) Lane3:L02 whole cell lysate(10ug) Lane4:H1792 whole cell lysate(10ug)