

## Product datasheet for **TA392755S**

### TRIP13 Rabbit Polyclonal Antibody

#### Product data:

Product Type:	Primary Antibodies
Applications:	WB
Recommended Dilution:	WB: 1:500~1:1000
Reactivity:	Human
Host:	Rabbit
Isotype:	IgG
Clonality:	Polyclonal
Immunogen:	Synthetic peptide, corresponding to amino acids 91-151 of Human TRIP13.
Specificity:	TRIP13 (E121) polyclonal antibody detects endogenous levels of TRIP13 protein.
Formulation:	Rabbit IgG, 1mg/ml in PBS with 0.02% sodium azide, 50% glycerol, pH7.2
Concentration:	1mg/ml
Conjugation:	Unconjugated
Storage:	Store at 4°C short term. Aliquot and store at -20°C long term. Avoid freeze-thaw cycles.
Stability:	1 year
Predicted Protein Size:	~ 48 kDa
Gene Name:	thyroid hormone receptor interactor 13
Database Link:	<a href="#">Entrez Gene 9319 Human Q15645</a>
Background:	Thyroid hormone receptors (TRs) are transcription factors that regulate the expression of specific genes in a hormone-dependent manner. TRIP13 (thyroid hormone receptor interactor 13), also called 16E1BP, is a transcription factor that interacts with the ligand binding domain of the thyroid receptor (TR) as well as a variety of target genes including human papilloma virus type 16 (HPV16) E1. Unlike most TRIP proteins which function only in the presence of hormones, TRIP13 does not require the presence of thyroid hormone to interact with TR. The association of TRIP13 with (HPV16) E1 suggests that TRIP13 may have tumor suppressor gene function. TRIP13 is a 432 amino acid protein with 2 different isoforms produced by alternative splicing.

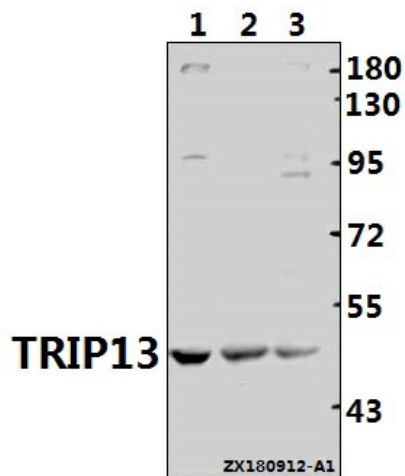


[View online »](#)

**Synonyms:** 16E1-BP; HPV16 E1 protein-binding protein; Human papillomavirus type 16 E1 protein-binding protein; Pachytene checkpoint protein 2 homolog; PCH2; Thyroid hormone receptor interactor 13; Thyroid receptor-interacting protein 13; TR-interacting protein 13; TRIP13; TRlphospho-13

**Note:** For research use only, not for use in diagnostic procedure.

**Product images:**



Western blot (WB) analysis of TRIP13 (E121) polyclonal antibody at 1:1000 dilution Lane1:HeLa whole cell lysate(40ug) Lane2:PC3 whole cell lysate(40ug) Lane3:HEK293T whole cell lysate(40ug)