

## Product datasheet for **TA392754M**

### PSMD2 Rabbit Polyclonal Antibody

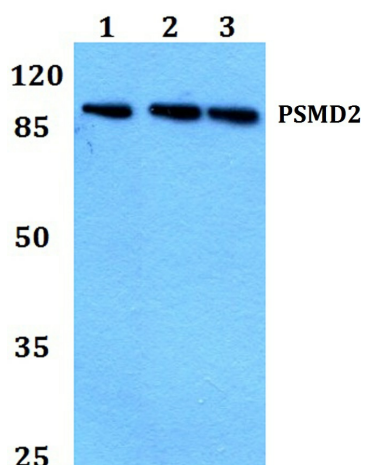
#### Product data:

Product Type:	Primary Antibodies
Applications:	WB
Recommended Dilution:	WB: 1:500~1:1000 IHC: 1:50~1:200
Reactivity:	Human
Host:	Rabbit
Isotype:	IgG
Clonality:	Polyclonal
Immunogen:	Synthetic peptide, corresponding to the N-terminus of Human PSMD2.
Specificity:	PSMD2 (R34) polyclonal antibody detects endogenous levels of PSMD2 protein.
Formulation:	Rabbit IgG, 1mg/ml in PBS with 0.02% sodium azide, 50% glycerol, pH7.2
Concentration:	1mg/ml
Conjugation:	Unconjugated
Storage:	Store at 4°C short term. Aliquot and store at -20°C long term. Avoid freeze-thaw cycles.
Stability:	1 year
Predicted Protein Size:	~ 100 kDa
Gene Name:	proteasome 26S subunit, non-ATPase 2
Database Link:	<a href="#">Entrez Gene 5708 Human Q13200</a>
Background:	PSMD2 (proteasome (prosome, macropain) 26S subunit, non-ATPase 2), also known as S2, TRAP2 (tumor necrosis factor type 1 receptor-associated protein 2) or p97, is a regulatory component of the 26S proteasome. It is expressed in skeletal muscle, brain, liver, placenta, kidney, pancreas, lung and heart. PSMD2 is one of the non-ATPase regulatory subunits of the 19S regulator lid and is implicated in substrate recognition and binding.
Synonyms:	26S proteasome non-ATPase regulatory subunit 2; 26S proteasome regulatory subunit RPN1; 26S proteasome regulatory subunit S2; 26S proteasome subunit p97; Protein 55.11; PSMD2; TRAP2; Tumor necrosis factor type 1 receptor-associated protein 2
Note:	For research use only, not for use in diagnostic procedure.

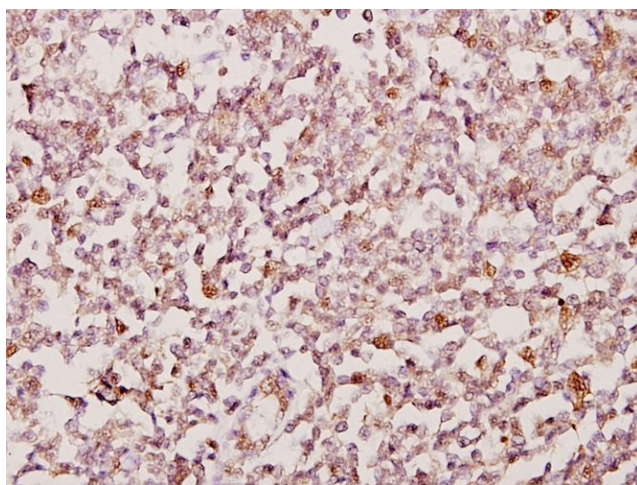


[View online »](#)

## Product images:



Western blot (WB) analysis of PSMD2 (R34) pAb at 1:500 dilution Lane1:MCF-7 whole cell lysate(40ug) Lane2:HepG2 whole cell lysate(40ug) Lane3:HEK293T whole cell lysate(40ug)



Immunohistochemistry (IHC) analysis of PSMD2 (R34) pAb in paraffin-embedded human tonsil cancer tissue at 1:50.