

## Product datasheet for **TA392754**

### PSMD2 Rabbit Polyclonal Antibody

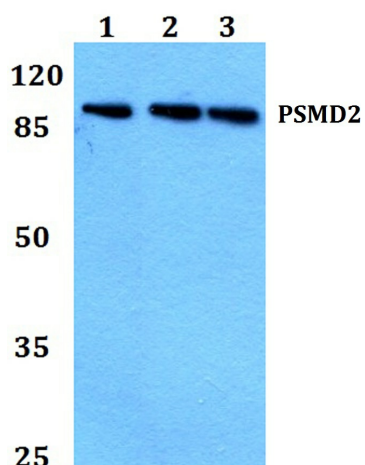
#### Product data:

|                         |  |
|-------------------------|--|
| Product Type:           | Primary Antibodies   |
| Applications:           | WB   |
| Recommended Dilution:   | WB: 1:500~1:1000 IHC: 1:50~1:200   |
| Reactivity:             | Human  |
| Host:                   | Rabbit   |
| Isotype:                | IgG  |
| Clonality:              | Polyclonal   |
| Immunogen:              | Synthetic peptide, corresponding to the N-terminus of Human PSMD2.   |
| Specificity:            | PSMD2 (R34) polyclonal antibody detects endogenous levels of PSMD2 protein.  |
| Formulation:            | Rabbit IgG, 1mg/ml in PBS with 0.02% sodium azide, 50% glycerol, pH7.2   |
| Concentration:          | 1mg/ml   |
| Conjugation:            | Unconjugated   |
| Storage:                | Store at 4°C short term. Aliquot and store at -20°C long term. Avoid freeze-thaw cycles.   |
| Stability:              | 1 year   |
| Predicted Protein Size: | ~ 100 kDa  |
| Gene Name:              | proteasome 26S subunit, non-ATPase 2   |
| Database Link:          | <a href="#">Entrez Gene 5708 Human Q13200</a>  |
| Background:             | PSMD2 (proteasome (prosome, macropain) 26S subunit, non-ATPase 2), also known as S2, TRAP2 (tumor necrosis factor type 1 receptor-associated protein 2) or p97, is a regulatory component of the 26S proteasome. It is expressed in skeletal muscle, brain, liver, placenta, kidney, pancreas, lung and heart. PSMD2 is one of the non-ATPase regulatory subunits of the 19S regulator lid and is implicated in substrate recognition and binding. |
| Synonyms:               | 26S proteasome non-ATPase regulatory subunit 2; 26S proteasome regulatory subunit RPN1; 26S proteasome regulatory subunit S2; 26S proteasome subunit p97; Protein 55.11; PSMD2; TRAP2; Tumor necrosis factor type 1 receptor-associated protein 2  |
| Note:                   | For research use only, not for use in diagnostic procedure.  |

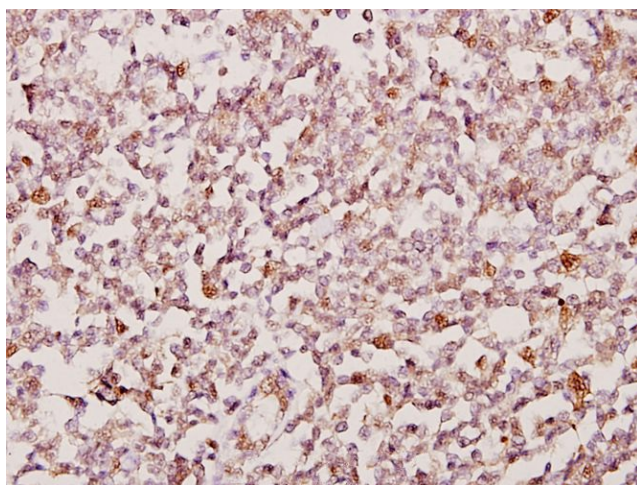


[View online »](#)

## Product images:



Western blot (WB) analysis of PSMD2 (R34) pAb at 1:500 dilution Lane1:MCF-7 whole cell lysate(40ug) Lane2:HepG2 whole cell lysate(40ug) Lane3:HEK293T whole cell lysate(40ug)



Immunohistochemistry (IHC) analyzes of PSMD2 (R34) pAb in paraffin-embedded human tonsil cancer tissue at 1:50.