

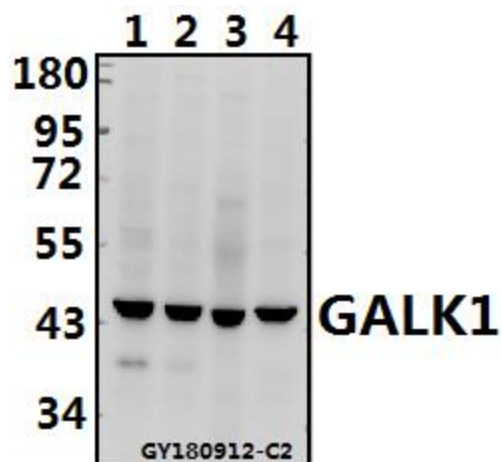
## Product datasheet for **TA392752M**

### **GALK1 Rabbit Polyclonal Antibody**

#### **Product data:**

Product Type:	Primary Antibodies
Applications:	WB
Recommended Dilution:	WB: 1:500~1:1000
Reactivity:	Human, Mouse, Rat
Host:	Rabbit
Isotype:	IgG
Clonality:	Polyclonal
Immunogen:	Synthetic peptide, corresponding to amino acids 5-45 of Human GALK1.
Specificity:	GALK1 (E15) polyclonal antibody detects endogenous levels of GALK1 protein.
Formulation:	Rabbit IgG, 1mg/ml in PBS with 0.02% sodium azide, 50% glycerol, pH7.2
Concentration:	1mg/ml
Conjugation:	Unconjugated
Storage:	Store at 4°C short term. Aliquot and store at -20°C long term. Avoid freeze-thaw cycles.
Stability:	1 year
Predicted Protein Size:	~ 42 kDa
Gene Name:	galactokinase 1
Database Link:	<a href="#">Entrez Gene 2584 Human P51570</a>
Background:	Galactose kinase (GALK1), also often designated galactokinase, is important in the first step of the galactose metabolism pathway. GALK1, which belongs to the GHMP kinase family of proteins, is a crucial enzyme for galactose metabolism. Defects in the gene encoding for galactose kinase, GALK1, can cause galactosemia II, an autosomal recessive disorder characterized by congenital cataracts during infancy, often within the first two weeks of life. In the adult population it can cause presenile cataracts that are secondary to accumulation of galactitol in the lens of the eye.
Synonyms:	Galactokinase; Galactose kinase; GALK; GALK1
Note:	For research use only, not for use in diagnostic procedure.

[View online »](#)

**Product images:**


Western blot (WB) analysis of GALK1 (E15) polyclonal antibody at 1:500 dilution  
 Lane1:HCT116 whole cell lysate(40ug) Lane2:SGC7901 whole cell lysate(40ug) Lane3:The Lung tissue lysate of Mouse(40ug) Lane4:PMVEC whole cell lysate(40ug)