

Product datasheet for **TA392751S**

BUD31 Rabbit Polyclonal Antibody

Product data:

Product Type:	Primary Antibodies
Applications:	WB
Recommended Dilution:	WB: 1:500~1:1000 IHC: 1:50~1:200
Reactivity:	Human, Mouse, Rat
Host:	Rabbit
Isotype:	IgG
Clonality:	Polyclonal
Immunogen:	Synthetic peptide, corresponding to amino acids N-terminus of Human BUD31.
Specificity:	BUD31 (E24) polyclonal antibody detects endogenous levels of BUD31 protein.
Formulation:	Rabbit IgG, 1mg/ml in PBS with 0.02% sodium azide, 50% glycerol, pH7.2
Concentration:	1mg/ml
Conjugation:	Unconjugated
Storage:	Store at 4°C short term. Aliquot and store at -20°C long term. Avoid freeze-thaw cycles.
Stability:	1 year
Predicted Protein Size:	~ 17 kDa
Gene Name:	BUD31 homolog
Database Link:	Entrez Gene 8896 Human P41223
Background:	<p>BUD31 (protein G10 homolog, EDG-2) is a 144 amino acid protein encoded by the human gene BUD31. BUD31 is a nuclear protein that belongs to the BUD31 (G10) family. BUD31 is found on chromosome 7 which is about 158 million bases long, encodes over 1,000 genes and makes up about 5% of the human genome. Chromosome 7 has been linked to osteogenesis imperfecta, Pendred syndrome, lissencephaly, citrullinemia and Shwachman-Diamond syndrome. The deletion of a portion of the long (q) arm of chromosome 7 is associated with Williams-Beuren syndrome, a condition characterized by mild mental retardation, an unusual comform and friendliness with strangers and an elfin appearance. Deletions of portions of the q arm of chromosome 7 are also seen in a number of myeloid disorders including cases of acute myelogenous leukemia and myelodysplasia.</p>

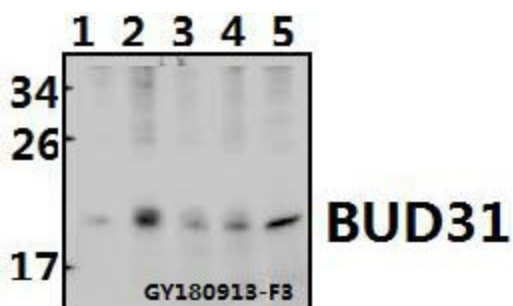


[View online >](#)

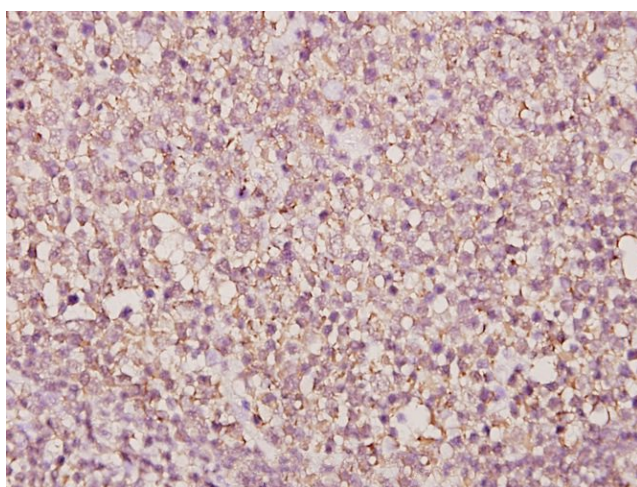
Synonyms: BUD31; EDG2; Protein BUD31 homolog; Protein EDG-2; Protein G10 homolog

Note: For research use only, not for use in diagnostic procedure.

Product images:



Western blot (WB) analysis of BUD31 (E24) polyclonal antibody at 1:500 dilution Lane1:A375 whole cell lysate(40ug) Lane2:HEK293T whole cell lysate(40ug) Lane3:SGC7901 whole cell lysate(40ug) Lane4:C6 whole cell lysate(40ug) Lane5:3T3-L1 whole cell lysate(40ug)



Immunohistochemistry (IHC) analyzes of BUD31 (E24) pAb in paraffin-embedded human tonsil carcinoma tissue at 1:50.