

Product datasheet for **TA392749M**

Cyclophilin F (PPIF) Rabbit Polyclonal Antibody

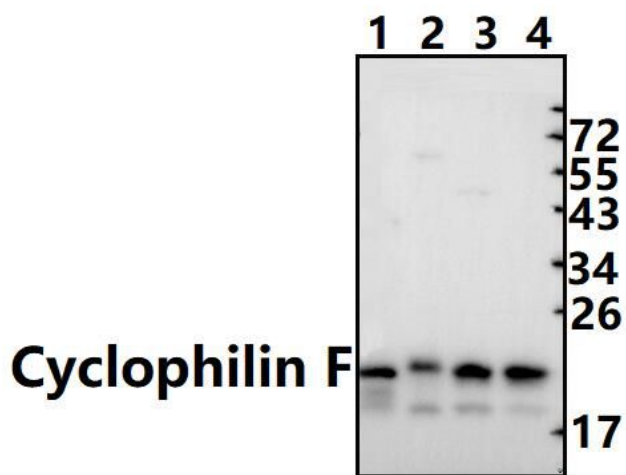
Product data:

| | |
|-------------------------|--|
| Product Type: | Primary Antibodies |
| Applications: | WB |
| Recommended Dilution: | WB: 1:500~1:1000 IHC: 1:50~1:200 |
| Reactivity: | Human, Mouse, Rat |
| Host: | Rabbit |
| Isotype: | IgG |
| Clonality: | Polyclonal |
| Immunogen: | Synthetic peptide, corresponding to amino acids 91-140 of Human Cyclophilin F. |
| Specificity: | Cyclophilin F (Y121) polyclonal antibody detects endogenous levels of Cyclophilin F protein. |
| Formulation: | Rabbit IgG, 1mg/ml in PBS with 0.02% sodium azide, 50% glycerol, pH7.2 |
| Concentration: | 1mg/ml |
| Conjugation: | Unconjugated |
| Storage: | Store at 4°C short term. Aliquot and store at -20°C long term. Avoid freeze-thaw cycles. |
| Stability: | 1 year |
| Predicted Protein Size: | ~ 22 kDa |
| Gene Name: | peptidylprolyl isomerase F |
| Database Link: | Entrez Gene 10105 Human P30405 |
| Background: | Cyclophilins are conserved, ubiquitous and abundant cytosolic peptidyl-prolyl cis-trans isomerases that accelerate the isomerization of XaaPro peptide bonds and the refolding of proteins. Cyclophilin D (CyP40) is a widely expressed cytoplasmic protein that catalyzes the cis-trans isomerization of proline imidic peptide bonds in oligopeptides. Cyclophilin F (CyP3), is also known as PPIF, Cyp-D or Rotamase F, is a 207 amino acid mitochondrial matrix protein involved in the induction of necrotic and apoptotic cell death through the activation of the mitochondrial permeability transition (mPT) pore. |
| Synonyms: | Cyclophilin D; Cyclophilin F; CyP-D; CyP-M; CYP3; CypD; Mitochondrial cyclophilin; Peptidyl-prolyl cis-trans isomerase F, mitochondrial; PPIase F; PPIF; Rotamase F |

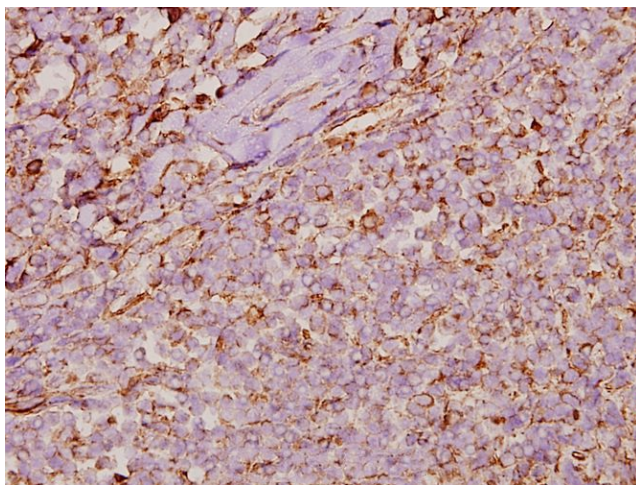

[View online »](#)

Note: For research use only, not for use in diagnostic procedure.

Product images:



Western blot (WB) analysis of Cyclophilin F (Y121) pAb at 1:1000 dilution Lane1:The Kidney tissue lysate of Mouse(40ug) Lane1:The Testis tissue lysate of Rat(40ug) Lane2:MCF-7 whole cell lysate(40ug) Lane3:SK-OVCAR3 whole cell lysate(40ug)



Immunohistochemistry (IHC) analyzes of Cyclophilin F (Y121) pAb in paraffin-embedded human tonsil carcinoma tissue at 1:50.