

## Product datasheet for **TA392749**

### Cyclophilin F (PPIF) Rabbit Polyclonal Antibody

#### Product data:

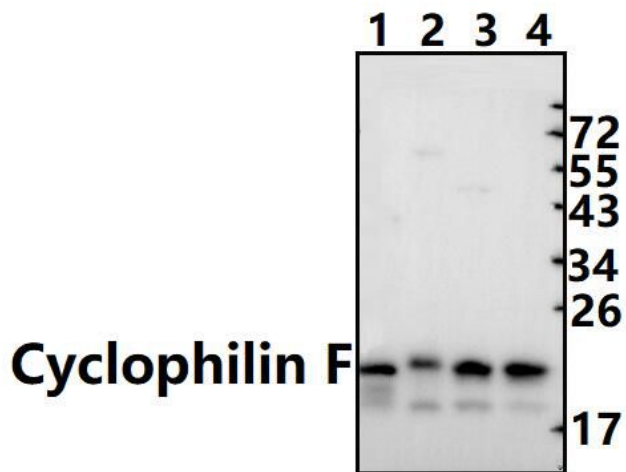
Product Type:	Primary Antibodies
Applications:	WB
Recommended Dilution:	WB: 1:500~1:1000 IHC: 1:50~1:200
Reactivity:	Human, Mouse, Rat
Host:	Rabbit
Isotype:	IgG
Clonality:	Polyclonal
Immunogen:	Synthetic peptide, corresponding to amino acids 91-140 of Human Cyclophilin F.
Specificity:	Cyclophilin F (Y121) polyclonal antibody detects endogenous levels of Cyclophilin F protein.
Formulation:	Rabbit IgG, 1mg/ml in PBS with 0.02% sodium azide, 50% glycerol, pH7.2
Concentration:	1mg/ml
Conjugation:	Unconjugated
Storage:	Store at 4°C short term. Aliquot and store at -20°C long term. Avoid freeze-thaw cycles.
Stability:	1 year
Predicted Protein Size:	~ 22 kDa
Gene Name:	peptidylprolyl isomerase F
Database Link:	<a href="#">Entrez Gene 10105 Human P30405</a>
Background:	Cyclophilins are conserved, ubiquitous and abundant cytosolic peptidyl-prolyl cis-trans isomerases that accelerate the isomerization of XaaPro peptide bonds and the refolding of proteins. Cyclophilin D (Cyp40) is a widely expressed cytoplasmic protein that catalyzes the cis-trans isomerization of proline imidic peptide bonds in oligopeptides. Cyclophilin F (Cyp3), is also known as PPIF, Cyp-D or Rotamase F, is a 207 amino acid mitochondrial matrix protein involved in the induction of necrotic and apoptotic cell death through the activation of the mitochondrial permeability transition (mPT) pore.
Synonyms:	Cyclophilin D; Cyclophilin F; Cyp-D; Cyp-M; CYP3; CypD; Mitochondrial cyclophilin; Peptidyl-prolyl cis-trans isomerase F, mitochondrial; PPIase F; PPIF; Rotamase F



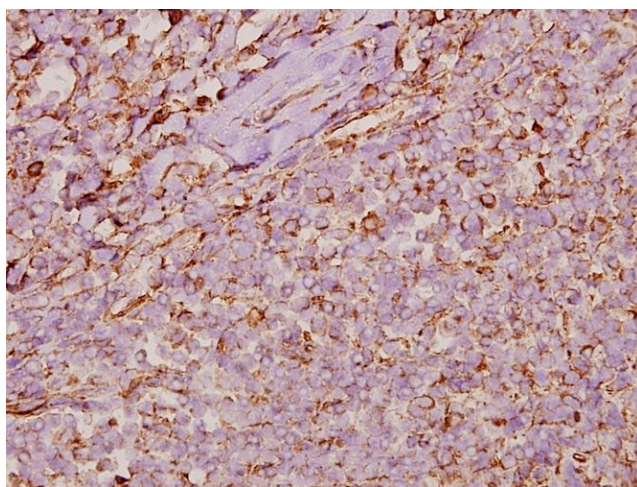
[View online »](#)

**Note:** For research use only, not for use in diagnostic procedure.

**Product images:**



Western blot (WB) analysis of Cyclophilin F (Y121) pAb at 1:1000 dilution Lane1:The Kidney tissue lysate of Mouse(40ug) Lane1:The Testis tissue lysate of Rat(40ug) Lane2:MCF-7 whole cell lysate(40ug) Lane3:SK-OVCAR3 whole cell lysate(40ug)



Immunohistochemistry (IHC) analyzes of Cyclophilin F (Y121) pAb in paraffin-embedded human tonsil carcinoma tissue at 1:50.