

Product datasheet for **TA392748S**

CMPK1 Rabbit Polyclonal Antibody

Product data:

Product Type:	Primary Antibodies
Applications:	WB
Recommended Dilution:	WB: 1:500~1:1000 IHC: 1:50~1:200 IP: 1:10~1:100
Reactivity:	Human, Mouse, Rat
Host:	Rabbit
Isotype:	IgG
Clonality:	Polyclonal
Immunogen:	Synthetic peptide, corresponding to the N-terminal of Human UMP-CMP Kinase.
Specificity:	UMP-CMP Kinase (E36) polyclonal antibody detects endogenous levels of UMP-CMP Kinase protein.
Formulation:	Rabbit IgG, 1mg/ml in PBS with 0.02% sodium azide, 50% glycerol, pH7.2
Concentration:	1mg/ml
Conjugation:	Unconjugated
Storage:	Store at 4°C short term. Aliquot and store at -20°C long term. Avoid freeze-thaw cycles.
Stability:	1 year
Predicted Protein Size:	~ 26 kDa
Gene Name:	cytidine/uridine monophosphate kinase 1
Database Link:	Entrez Gene 51727 Human P30085
Background:	Nucleoside monophosphate kinases are required for pharmacological activation of therapeutic nucleosides and nucleotide analogs. CMPK (Cytidine monophosphate kinase), also known as UMP-CMP kinase and Deoxycytidylate kinase, is a 196 amino acid protein that catalyzes the phosphoryl transfer from ATP to UMP, CMP and dCMP. This enzymatic reaction leads to the formation of ADP and the corresponding nucleoside diphosphate, which are required for cellular nucleic acid synthesis. Primarily localized to the cytoplasm, CMPK also plays an important role in the activation of pyrimidine analogs, which is clinically useful anti-cancer and anti-viral drugs. CMP is the best substrate for CMPK, followed by UMP and dCMP.

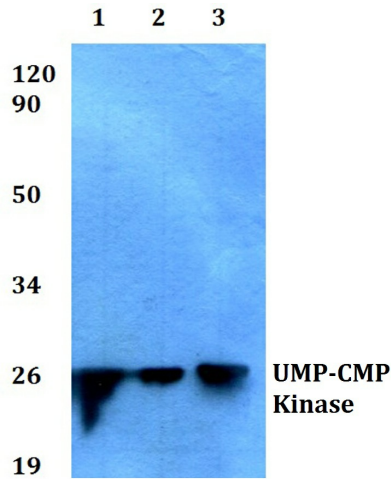


[View online »](#)

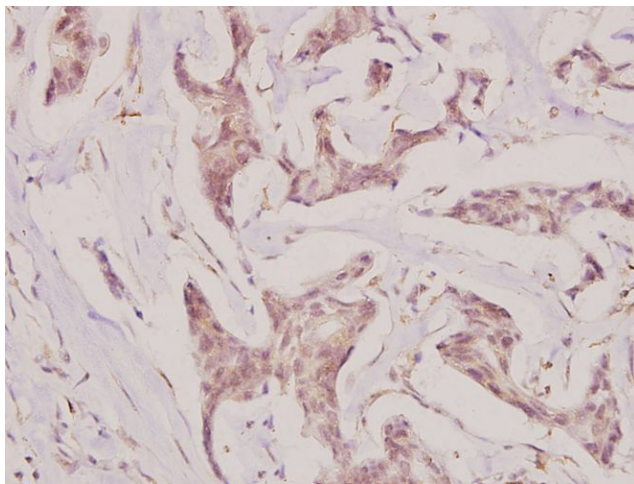
Synonyms: CMK; CMPK; CMPK1; dCMP kinase; Deoxycytidylate kinase; Nucleoside-diphosphate kinase; UCK; UMK; UMP-CMP kinase; UMP/CMPK; UMP/CMP kinase; UMPK; Uridine monophosphate/cytidine monophosphate kinase

Note: For research use only, not for use in diagnostic procedure.

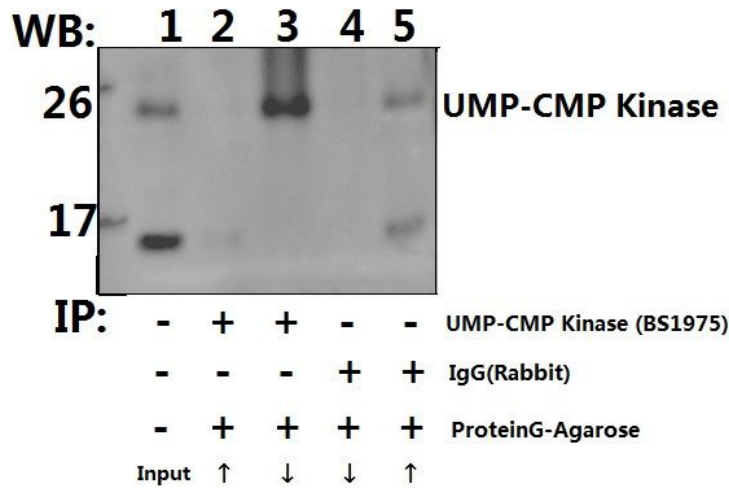
Product images:



Western blot (WB) analysis of UMP-CMP Kinase (E36) pAb at 1:1000 dilution Lane1:Hela whole cell lysate(40ug) Lane2:H9C2 whole cell lysate(40ug) Lane3:MEF whole cell lysate(40ug) Lane4:A549 whole cell lysate(40ug) Lane5:HEK293T whole cell lysate(40ug)



Immunohistochemistry (IHC) analyzes of UMP-CMP Kinase (E36) pAb in paraffin-embedded human breast carcinoma tissue at 1:100.



Immunoprecipitation of HEK293T cell lysate using UMP-CMP Kinase (E36) pAb (Sepharose Bead Conjugate) #BD0048(lane 2 and lane 3) and Nonspecific IgG Control (Sepharose Bead Conjugate) #BD0048 (lane 4 and lane 5) .Lane 1 is 30% input. The western blot was probed using UMP-CMP Kinase (E36) # [TA392748]. "↑"supernatant; "↓"(deposition