

## Product datasheet for **TA392747**

### TFIIIE beta (GTF2E2) Rabbit Polyclonal Antibody

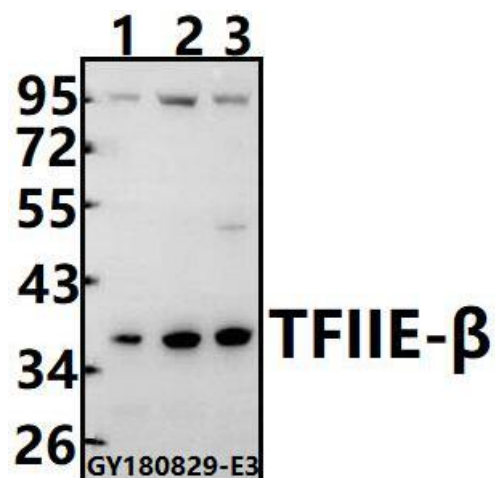
#### Product data:

Product Type:	Primary Antibodies
Applications:	WB
Recommended Dilution:	WB: 1:500~1:1000
Reactivity:	Human, Mouse
Host:	Rabbit
Isotype:	IgG
Clonality:	Polyclonal
Immunogen:	Synthetic peptide, corresponding to amino acids 153-213 of Human TFIIIE- $\beta$ .
Specificity:	TFIIIE- $\beta$ (K183) pAb detects endogenous levels of TFIIIE- $\beta$ protein.
Formulation:	Rabbit IgG, 1mg/ml in PBS with 0.02% sodium azide, 50% glycerol, pH7.2
Concentration:	1mg/ml
Conjugation:	Unconjugated
Storage:	Store at 4°C short term. Aliquot and store at -20°C long term. Avoid freeze-thaw cycles.
Stability:	1 year
Predicted Protein Size:	~ 33 kDa
Gene Name:	general transcription factor IIE subunit 2
Database Link:	<a href="#">Entrez Gene 2961 Human P29084</a>
Background:	The general transcription factor TFIIIE consists of two subunits, $\alpha$ and $\beta$ , and plays essential roles in transcription. Structure-function studies indicate that TFIIIE has three-winged helix (WH) motifs, with one in TFIIIE $\alpha$ and two in TFIIIE $\beta$ . By binding to the clamp region of RNA polymerase II, TFIIIE $\alpha$ -WH promotes the conformational change that transforms the promoter-bound inactive preinitiation complex to the active complex.
Synonyms:	General transcription factor IIE subunit 2; GTF2E2; TF2E2; TFIIIE-beta; Transcription initiation factor IIE subunit beta
Note:	For research use only, not for use in diagnostic procedure.



[View online »](#)

## Product images:



Western blot (WB) analysis of TFIIE-β (K183) pAb at 1:500 dilution Lane1:SGC7901 whole cell lysate(40ug) Lane2:HCT116 whole cell lysate(40ug) Lane3:The Testis tissue lysate of Mouse(40ug)