

## Product datasheet for TA392746M

### XPG (ERCC5) Rabbit Polyclonal Antibody

#### Product data:

Product Type:	Primary Antibodies
Applications:	WB
Recommended Dilution:	WB: 1:500~1:1000 IHC: 1:50~1:200
Reactivity:	Human
Host:	Rabbit
Isotype:	IgG
Clonality:	Polyclonal
Immunogen:	Synthetic peptide, corresponding to amino acids 130-180 of Human ERCC5/XPG.
Specificity:	XPG (E160) polyclonal antibody detects endogenous levels of XPG protein.
Formulation:	Rabbit IgG, 1mg/ml in PBS with 0.02% sodium azide, 50% glycerol, pH7.2
Concentration:	1mg/ml
Conjugation:	Unconjugated
Storage:	Store at 4°C short term. Aliquot and store at -20°C long term. Avoid freeze-thaw cycles.
Stability:	1 year
Predicted Protein Size:	~ 133, 200 kDa
Gene Name:	ERCC excision repair 5, endonuclease
Database Link:	<a href="#">Entrez Gene 2073 Human P28715</a>

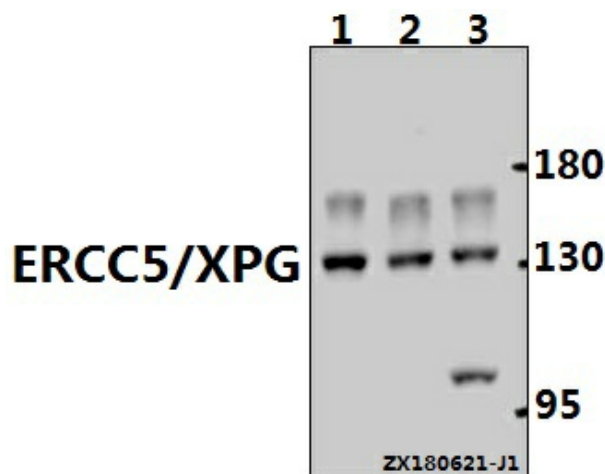
**Background:** Seven complementation groups (A-G) of xeroderma pigmentosum have been described. The xeroderma pigmentosum group A protein, XPA, is a zinc metalloprotein which preferentially binds to DNA damaged by ultraviolet (UV) radiation and chemical carcinogens. XPA is a DNA repair enzyme that has been shown to be required for the incision step of nucleotide excision repair. XPG (also designated ERCC5) is an endonuclease that makes the 3' incision in DNA nucleotide excision repair. Mammalian XPG is similar in sequence to yeast RAD2. Conserved residues in the catalytic center of XPG are important for nuclease activity and function in nucleotide excision repair.


[View online »](#)

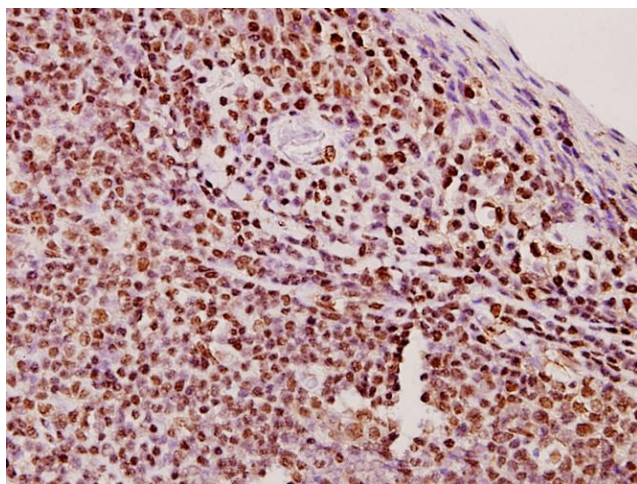
**Synonyms:** COFS 3; COFS3; DNA excision repair protein ERCC-5; DNA excision repair protein ERCC 5; ERCC 5; ERCC5; ERCM 2; ERCM2; Excision Repair Cross Complementing Rodent Repair Deficiency; XPG; XPGC; XPG complementing protein

**Note:** For research use only, not for use in diagnostic procedure.

**Product images:**



Western blot (WB) analysis of ERCC5/XPG (E160) pAb at 1:1000 dilution Lane1:PC3 whole cell lysate(40ug) Lane2:SGC7901 whole cell lysate(20ug) Lane3:HCT116 whole cell lysate(20ug)



Immunohistochemistry (IHC) analyzes of ERCC5/XPG (E160) pAb in paraffin-embedded human tonsil carcinoma tissue at 1:50.