

Product datasheet for **TA392745M**

Myeloid zinc finger 1 (MZF1) Rabbit Polyclonal Antibody

Product data:

Product Type:	Primary Antibodies
Applications:	WB
Recommended Dilution:	WB: 1:500~1:1000
Reactivity:	Human, Mouse, Rat
Host:	Rabbit
Isotype:	IgG
Clonality:	Polyclonal
Immunogen:	Synthetic peptide, corresponding to amino acids 5-55 of Human MZF-1.
Specificity:	MZF-1 (D10) pAb detects endogenous levels of MZF-1 protein.
Formulation:	Rabbit IgG, 1mg/ml in PBS with 0.02% sodium azide, 50% glycerol, pH7.2
Concentration:	1mg/ml
Conjugation:	Unconjugated
Storage:	Store at 4°C short term. Aliquot and store at -20°C long term. Avoid freeze-thaw cycles.
Stability:	1 year
Predicted Protein Size:	~ 82 kDa
Gene Name:	myeloid zinc finger 1
Database Link:	Entrez Gene 7593 Human P28698

Background: Zinc finger genes encode metal-binding proteins are transcriptional regulators of other genes. Myeloid zinc finger 1 (MZF-1), also designated zinc finger protein 42, and transcription factor ZBP-89, also designated zinc finger protein 148, belong to the Krüppel C2H2-type zinc-finger protein family. The gene encoding for the MZF-1 protein maps to chromosome 19q13.43, while the gene encoding for ZBP-89 is localized on chromosome 3q21.2. These proteins are nuclear proteins involved in the regulation of transcriptional events. MZF-1 regulates transcription during hemopoietic development and plays a role in myeloid cell differentiation. It regulates the CD34 promoter in a tissue-specific manner. MZF-1 and FHL3 can form a complex of high molecular mass with other proteins in the nucleus. MZF-1 is induced by retinoic acid and is primarily expressed in differentiating myeloid cells.

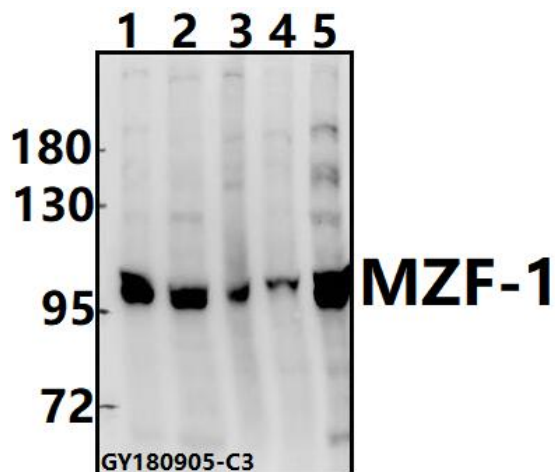


[View online »](#)

Synonyms: Myeloid zinc finger 1; MZF; MZF-1; MZF1; Zinc finger and SCAN domain-containing protein 6; Zinc finger protein 42; ZNF42; ZSCAN6

Note: For research use only, not for use in diagnostic procedure.

Product images:



Western blot (WB) analysis of MZF-1 (D10) pAb at 1:500 dilution Lane1:MG63 whole cell lysate(30ug) Lane2:Panc1 whole cell lysate(40ug) Lane3:C6 whole cell lysate(40ug) Lane4:3T3-L1 whole cell lysate(40ug) Lane5:K562 whole cell lysate(40ug)