

Product datasheet for **TA392744M**

APE1 (APEX1) Rabbit Polyclonal Antibody

Product data:

Product Type:	Primary Antibodies
Applications:	WB
Recommended Dilution:	WB: 1:500~1:1000 IHC: 1:50~1:200
Reactivity:	Human, Mouse, Rat
Host:	Rabbit
Isotype:	IgG
Clonality:	Polyclonal
Immunogen:	Synthetic peptide, corresponding to amino acids 190-240 of Human APEX1.
Specificity:	APEX1 (R221) polyclonal antibody detects endogenous levels of APEX1 protein.
Formulation:	Rabbit IgG, 1mg/ml in PBS with 0.02% sodium azide, 50% glycerol, pH7.2
Concentration:	1mg/ml
Conjugation:	Unconjugated
Storage:	Store at 4°C short term. Aliquot and store at -20°C long term. Avoid freeze-thaw cycles.
Stability:	1 year
Predicted Protein Size:	~ 37 kDa
Gene Name:	apurinic/aprimidinic endodeoxyribonuclease 1
Database Link:	Entrez Gene 328 Human P27695
Background:	<p>The role of transcription factors in the regulation of gene expression is well established. Although the activity of these factors can be regulated by phosphorylation, evidence has indicated regulation of DNA binding mediated by changes in reduction-oxidation (redox) status. Mutational analysis has identified a single conserved cysteine residue mapping within the DNA binding domains of Fos and Jun. Chemical oxidation or modification of this cysteine residue inhibits the DNA binding activity of Fos and Jun. A similar mode of regulation has been recently proposed for other nuclear transcription factors. Oxidation is reversible by these compounds or by a cellular redox/DNA repair protein identified originally as Ref-1 (redox factor 1). Ref-1 is identical to a previously characterized DNA repair enzyme designated HAP1, APE or APEX.</p>

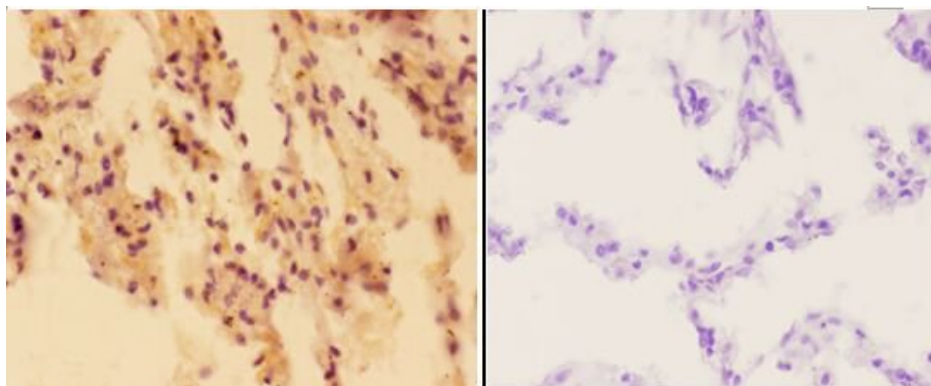

[View online »](#)

Synonyms:

APE; APE-1; APE 1; APEN; APEX; APEX 1; APEX1; Apex nuclease; APEX nuclease (multifunctional DNA repair enzyme) 1; Apex nuclease 1; AP lyase; Apurinic-apyrimidinic endonuclease 1; Apurinic/apyrimidinic (abasic) endonuclease; Apurinic/apyrimidinic endonuclease 1; Apurinic/apyrimidinic exonuclease; Apurinic endonuclease; APX; BAP1; Deoxyribonuclease (apurinic or apyrimidinic); DNA (apurinic or apyrimidinic site) lyase; DNA-(apurinic or apyrimidinic site) lyase; mit

Note:

For research use only, not for use in diagnostic procedure.

Product images:


Immunohistochemistry (IHC) analyzes of APEX1 (R221) pAb in paraffin-embedded human lung carcinoma tissue at 1:50, showing nuclear staining. Negative control (the right) Using PBS instead of primary antibody, secondary antibody is Goat Anti-Rabbit IgG-biotin followed by avidin-peroxidase.