

Product datasheet for **TA392743M**

MARK3 Rabbit Polyclonal Antibody

Product data:

Product Type:	Primary Antibodies
Applications:	WB
Recommended Dilution:	WB: 1:500~1:1000 IHC: 1:50~1:200
Reactivity:	Human, Mouse, Rat
Host:	Rabbit
Isotype:	IgG
Clonality:	Polyclonal
Immunogen:	Synthetic peptide, corresponding to the N-terminal of Human c-TAK1.
Specificity:	c-TAK1 (P8) polyclonal antibody detects endogenous levels of C-TAK1 protein.
Formulation:	Rabbit IgG, 1mg/ml in PBS with 0.02% sodium azide, 50% glycerol, pH7.2
Concentration:	1mg/ml
Conjugation:	Unconjugated
Storage:	Store at 4°C short term. Aliquot and store at -20°C long term. Avoid freeze-thaw cycles.
Stability:	1 year
Predicted Protein Size:	~ 87 kDa
Gene Name:	microtubule affinity regulating kinase 3
Database Link:	Entrez Gene 4140 Human P27448
Background:	<p>c-TAK1 (Cdc25C associated protein kinase) phosphorylates Cdc25C on Ser 216 and is ubiquitously expressed in various human tissue and cell lines. C-TAK1 is distinct from Chk1, which also phosphorylates Cdc25C on Ser 216 in response to DNA damage. Phosphorylation of Cdc25C allows for the preferential binding of 14-3-3 proteins, subsequently retaining Cdc25C in the cytoplasm. Thus, the binding of 14-3-3 proteins prevents Cdc25C from dephosphorylating Cdc2 in the nucleus, thereby controlling the entry of the cells into mitosis. It is suggested that C-TAK1 mediates the binding of the 14-3-3 proteins through its kinase activity and acts as a negative regulator of mitosis.</p>

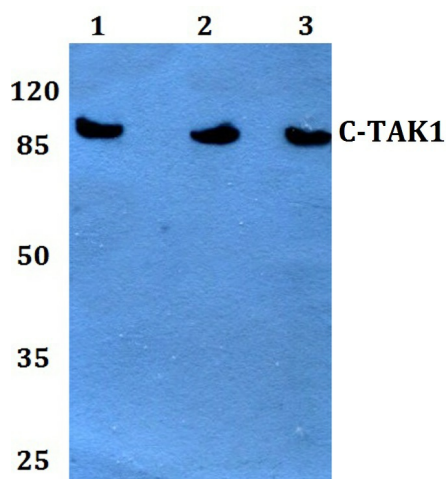
[View online »](#)

Synonyms:

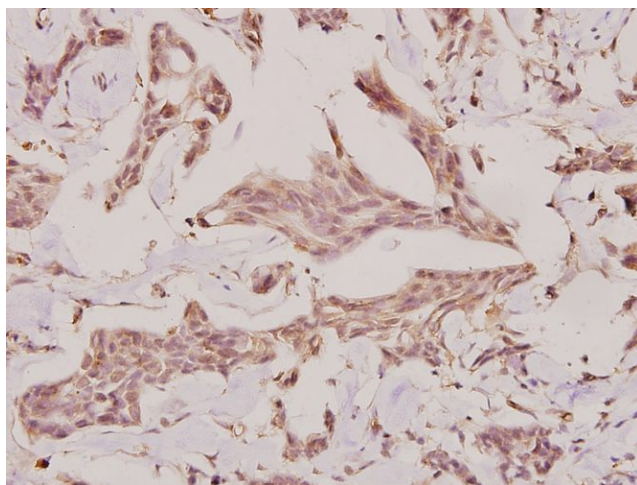
C-TAK1; Cdc25C-associated protein kinase 1; Cdc25C associated protein kinase 1; CTAK1; cTAK1; ELKL motif kinase 2; EMK-2; Emk2; ETK 1; KIAA4230; KP78; MAP/microtubule affinity-regulating kinase 3; MAP microtubule affinity regulating kinase 3; MARK3; Mark3; PAR1A; Par 1a; Protein kinase STK10; Ser/Thr protein kinase PAR-1; Serine/threonine-protein kinase p78; Serine threonine protein kinase p78; SerThr protein kinase PAR 1

Note:

For research use only, not for use in diagnostic procedure.

Product images:


Western blot (WB) analysis of c-TAK1 (P8) pAb at 1:1000 dilution Lane1:Hela whole cell lysate(40ug) Lane2:HEK293T whole cell lysate(40ug) Lane3:C6 whole cell lysate(40ug) Lane4:CT26 whole cell lysate(40ug)



Immunohistochemistry (IHC) analyzes of c-TAK1 (P8) pAb in paraffin-embedded human breast carcinoma tissue at 1:100.