

## Product datasheet for TA392742M

### Pentraxin 3 (PTX3) Rabbit Polyclonal Antibody

#### Product data:

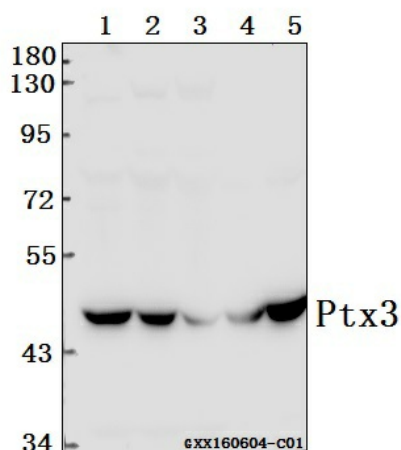
Product Type:	Primary Antibodies
Applications:	WB
Recommended Dilution:	WB: 1:500~1:1000 IHC: 1:50~1:200 IF: 1:50~1:200
Reactivity:	Human, Mouse, Rat
Host:	Rabbit
Isotype:	IgG
Clonality:	Polyclonal
Immunogen:	Synthetic peptide, corresponding to the N-terminal of Human Ptx3.
Specificity:	Ptx3 (Y27) polyclonal antibody detects endogenous levels of Ptx3 protein.
Formulation:	Rabbit IgG, 1mg/ml in PBS with 0.02% sodium azide, 50% glycerol, pH7.2
Concentration:	1mg/ml
Conjugation:	Unconjugated
Storage:	Store at 4°C short term. Aliquot and store at -20°C long term. Avoid freeze-thaw cycles.
Stability:	1 year
Predicted Protein Size:	~ 41 kDa
Gene Name:	pentraxin 3
Database Link:	<a href="#">Entrez Gene 5806 Human P26022</a>
Background:	<p>Pentraxins are a protein superfamily that is characterized by a cyclic multimeric structure. Ptx3, also known as tumor necrosis factor-stimulated gene sequence-14 (TSG14), is a secreted pattern-recognition receptor that has a non-redundant role in resistance to selected microbial agents. Ptx3 belongs to the family of "long pentraxins", which have C-terminal pentraxin domains and novel amino-terminal domains. Ptx3 binds selected pathogens, including <i>Aspergillus fumigatus</i>, <i>Pseudomonas aeruginosa</i> and <i>Salmonella typhimurium</i>. It is synthesized in IgA glomerulonephritis and activates mesangial cells. Secretion of Ptx3 in adipose cells can be induced by TNF. Ptx3 is also involved in amplification of inflammatory reactions and regulation of innate immunity. The human PTX3 gene maps to chromosome 3q25.</p>


[View online »](#)

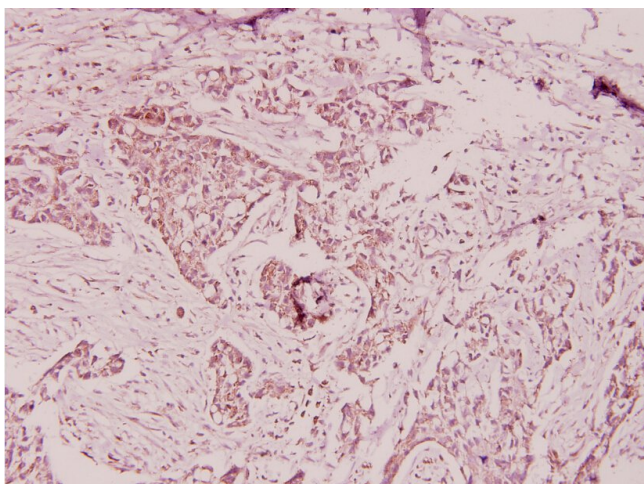
**Synonyms:** Pentaxin-related protein PTX3; Pentraxin-related protein PTX3; PTX3; TNFAIP5; TNF alpha-induced protein 5; TSG-14; TSG14; Tumor necrosis factor-inducible gene 14 protein; Tumor necrosis factor alpha-induced protein 5

**Note:** For research use only, not for use in diagnostic procedure.

**Product images:**



Western blot (WB) analysis of Ptx3 (Y27) polyclonal antibody at 1:500 dilution  
Lane1:SGC7901 whole cell lysate(40ug)  
Lane2:786-O whole cell lysate(40ug)  
Lane3:HEK293T whole cell lysate(40ug) Lane4:The Brain tissue lysate of Rat(40ug) Lane5:The Brain tissue lysate of Mouse(40ug)



Immunohistochemistry (IHC) analyzes of Ptx3 (Y27) pAb in paraffin-embedded human breast carcinoma tissue at 1:100.