

Product datasheet for **TA392740M**

GRK2 Rabbit Polyclonal Antibody

Product data:

Product Type:	Primary Antibodies
Applications:	WB
Recommended Dilution:	WB: 1:500~1:1000 IHC: 1:50~1:200 IP: 1:10~1:100
Reactivity:	Human, Mouse, Rat
Host:	Rabbit
Isotype:	IgG
Clonality:	Polyclonal
Immunogen:	Synthetic peptide, corresponding to amino acids 600-650 of Human GRK2.
Specificity:	GRK 2 (D635) polyclonal antibody detects endogenous levels of GRK 2 protein.
Formulation:	Rabbit IgG, 1mg/ml in PBS with 0.02% sodium azide, 50% glycerol, pH7.2
Concentration:	1mg/ml
Conjugation:	Unconjugated
Storage:	Store at 4°C short term. Aliquot and store at -20°C long term. Avoid freeze-thaw cycles.
Stability:	1 year
Predicted Protein Size:	~ 80 kDa
Gene Name:	G protein-coupled receptor kinase 2
Database Link:	Entrez Gene 156 Human P25098
Background:	Heterotrimeric G protein-mediated signal transduction is a dynamically regulated process with the intensity of signal decreasing over time despite the continued presence of the agonist. This phenomenon, referred to as agonist-mediated desensitization, involves phosphorylation of the receptor by two classes of enzymes. The first are the second messenger-regulated kinases such as c-AMP dependent protein kinase A and protein kinase C. The second are the G protein-coupled receptor kinases (GRKs). At least seven members of the GRK family have been identified. These include rhodopsin kinase, GRK 1; two forms of β -adrenergic receptor kinase, GRK 2 (β ARK, β ARK1) and GRK 3 (β ARK2); IT-11 (GRK 4); GRK 5, GRK 6 and GRK 7. Phosphorylation of receptors by GRKs appears to be strictly dependent on the receptor being in its agonist-activated state.

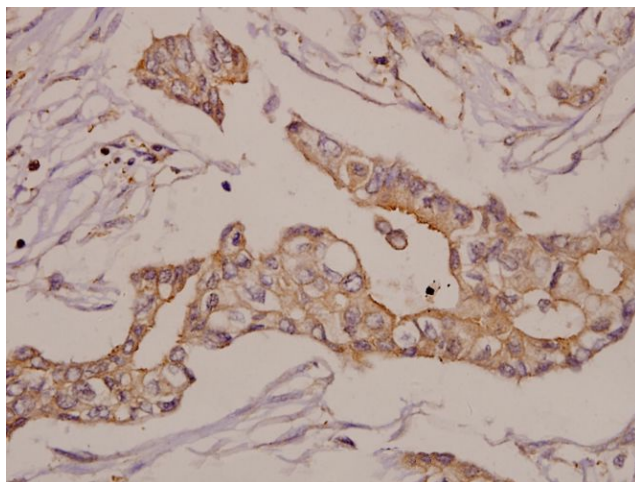


[View online »](#)

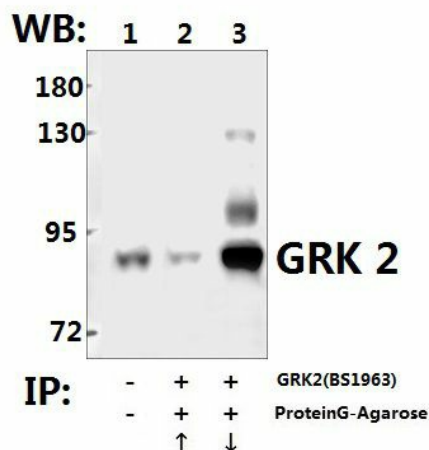
Synonyms: ADRBK1; ARK- β 1; ARK β 1; ARK β 1; BARK; BARK1; Beta-adrenergic receptor kinase 1; Beta-ARK-1; G-protein coupled receptor kinase 2; GRK2; β -ARK-1; β -ARK1

Note: For research use only, not for use in diagnostic procedure.

Product images:



Immunohistochemistry (IHC) analyzes of GRK 2 (D635) pAb in paraffin-embedded human breast carcinoma tissue at 1:50.



Immunoprecipitation of HEK293T cell lysate using ADRBK1/GRK2 (D635) pAb (Sepharose Bead Conjugate) #BD0048(lane 2 and lane 3) .Lane 1 is 30% input. The western blot was probed using ADRBK1/GRK2 (D635) # [TA392740]. "↑"↑supernatant; "↓(deposition"