

Product datasheet for **TA392738S**

NR2F2 Rabbit Polyclonal Antibody

Product data:

Product Type:	Primary Antibodies
Applications:	WB
Recommended Dilution:	WB: 1:500~1:1000 IHC: 1:50~1:200
Reactivity:	Human, Mouse, Rat
Host:	Rabbit
Isotype:	IgG
Clonality:	Polyclonal
Immunogen:	Synthetic peptide, corresponding to the N-terminal of Human ARP-1.
Specificity:	ARP-1 (T7) polyclonal antibody detects endogenous levels of ARP-1 protein.
Formulation:	Rabbit IgG, 1mg/ml in PBS with 0.02% sodium azide, 50% glycerol, pH7.2
Concentration:	1mg/ml
Conjugation:	Unconjugated
Storage:	Store at 4°C short term. Aliquot and store at -20°C long term. Avoid freeze-thaw cycles.
Stability:	1 year
Predicted Protein Size:	~ 45 kDa
Gene Name:	nuclear receptor subfamily 2 group F member 2
Database Link:	Entrez Gene 7026 Human P24468
Background:	COUP (chicken ovalbumin upstream promoter) transcription factors have been cloned in several species and identified as orphan members of the steroid/thyroid hormone receptor superfamily. COUP-TFI (also designated COUP or EAR-3) and ARP-1 (also designated COUP-TFII) exhibit highly regulated and overlapping expression in most tissues. COUP-TFs are highly expressed in the developing and central nervous system, suggesting that these factors may be important in neural development and differentiation. COUP-TFs can compete for binding to response elements which are common to other members of this family, including RAR, RXR, PPAR, HNF-4, VDR and TR. They have been shown to act as negative regulators as well as initiators of transcription.

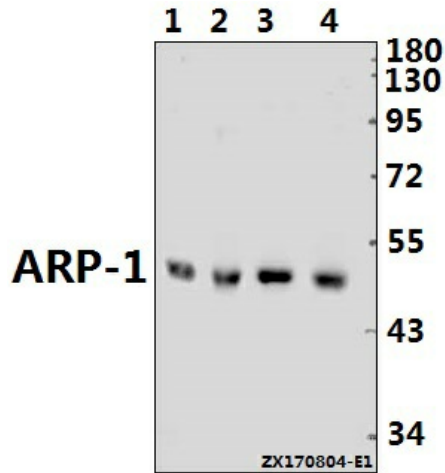


[View online »](#)

Synonyms: Apolipoprotein A-I regulatory protein 1; ARP-1; ARP1; COUP-TF2; COUP-TF II; COUP TF2; COUPTF2; COUP transcription factor 2; COUP transcription factor II; NR2F2; Nuclear receptor subfamily 2 group F member 2; TFCOUP2

Note: For research use only, not for use in diagnostic procedure.

Product images:



Western blot (WB) analysis of ARP-1 (T7) pAb at 1:500 dilution Lane1:MCF-7 whole cell lysate(40ug) Lane2:HEK293T whole cell lysate(20ug) Lane3:H9C2 whole cell lysate(20ug) Lane4:MEF whole cell lysate(40ug)