

Product datasheet for TA392737M

ITPKA Rabbit Polyclonal Antibody

Product data:

Product Type:	Primary Antibodies
Applications:	WB
Recommended Dilution:	WB: 1:500~1:1000
Reactivity:	Human, Mouse, Rat
Host:	Rabbit
Isotype:	IgG
Clonality:	Polyclonal
Immunogen:	Synthetic peptide, corresponding to amino acids 400-450 of Human IP3KA.
Specificity:	IP3KA (H431) polyclonal antibody detects endogenous levels of IP3KA protein.
Formulation:	Rabbit IgG, 1mg/ml in PBS with 0.02% sodium azide, 50% glycerol, pH7.2
Concentration:	1mg/ml
Conjugation:	Unconjugated
Storage:	Store at 4°C short term. Aliquot and store at -20°C long term. Avoid freeze-thaw cycles.
Stability:	1 year
Predicted Protein Size:	~ 51 kDa
Gene Name:	inositol-trisphosphate 3-kinase A
Database Link:	Entrez Gene 3706 Human P23677

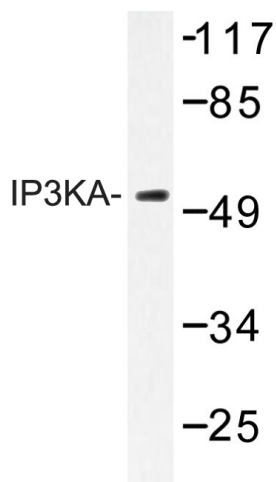
Background: Inositol 1,4,5-trisphosphate (Ins(1,4,5)P₃) regulates the level of calcium within the cell by releasing calcium from intracellular stores. Ins(1,4,5)P₃ is phosphorylated by inositol 1,4,5-trisphosphate 3-kinase (IP3K) to form inositol 1,3,4,5-tetrakisphosphate (Ins(1,4,5)P₄), which is thought to regulate the influx of calcium across the plasma membrane. IP3K exists as three isoforms, IP3KA, B, and C. IP3KA, the most highly characterized isoform, is approximately 51 kDa and is expressed in rat brain and testis. IP3KB has a molecular weight of 74 kDa and is expressed in various rat tissues such as lung, thymus, testis, brain, and heart. IP3K activity is stimulated in the presence of calmodulin via phosphorylation by cAMP-dependent protein kinase, protein kinase C, or calcium/calmodulin dependent protein kinase II and, subsequently, mediates the inositol phosphate signaling pathways.


[View online »](#)

Synonyms: 1D myo inositol trisphosphate 3 kinase A; EC 2.7.1.127; Inositol 1 4 5 trisphosphate 3 kinase A; Inositol trisphosphate 3 kinase A; IP3 3 kinase A; IP3K A; IP3KA

Note: For research use only, not for use in diagnostic procedure.

Product images:



Western blot (WB) analysis of IP3KA (H431) polyclonal antibody at 1:500 dilution Lane1:THP-1 whole cell lysate(40ug) Lane2:The Lung tissue lysate of Rat(40ug) Lane3:The Lung tissue lysate of Mouse(40ug) Lane4:Jurkat whole cell lysate(40ug)