

## Product datasheet for **TA392736S**

### MYF6 Rabbit Polyclonal Antibody

#### Product data:

Product Type:	Primary Antibodies
Applications:	WB
Recommended Dilution:	WB: 1:500~1:1000 IHC: 1:50~1:200
Reactivity:	Human, Mouse, Rat
Host:	Rabbit
Isotype:	IgG
Clonality:	Polyclonal
Immunogen:	Synthetic peptide, corresponding to amino acids 120-170 of Human Myf-6.
Specificity:	Myf-6 (R150) polyclonal antibody detects endogenous levels of Myf-6 protein.
Formulation:	Rabbit IgG, 1mg/ml in PBS with 0.02% sodium azide, 50% glycerol, pH7.2
Concentration:	1mg/ml
Conjugation:	Unconjugated
Storage:	Store at 4°C short term. Aliquot and store at -20°C long term. Avoid freeze-thaw cycles.
Stability:	1 year
Predicted Protein Size:	~ 30 kDa
Gene Name:	myogenic factor 6
Database Link:	<a href="#">Entrez Gene 4618 Human P23409</a>
Background:	Differentiation of myogenic cells is regulated by multiple positively and negatively acting factors. One well characterized family of helix-loop-helix (HLH) proteins known to play an important role in the regulation of muscle cell development includes Myo D, myogenin, Myf-5 and Myf-6 (also designated MRF-4 or herculin). Most muscle cells express either Myo D or Myf-5 in the committed state, but when induced to differentiate, all turn on expression of myogenin. Myo D transcription factors form heterodimers with products of a more widely expressed family of bHLH genes, the E family, which consists of at least three distinct genes: E2A, IF2 and HEB. Myo D-E heterodimers bind avidly to consensus (CANNTG) E box target sites that are functionally important elements in the upstream regulatory sequences of many muscle-specific terminal differentiation genes.

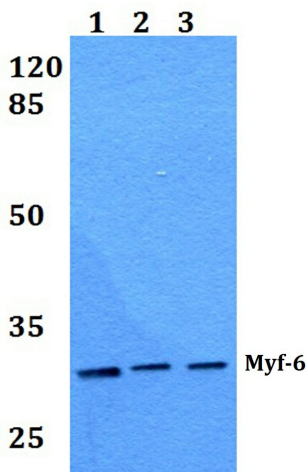


[View online »](#)

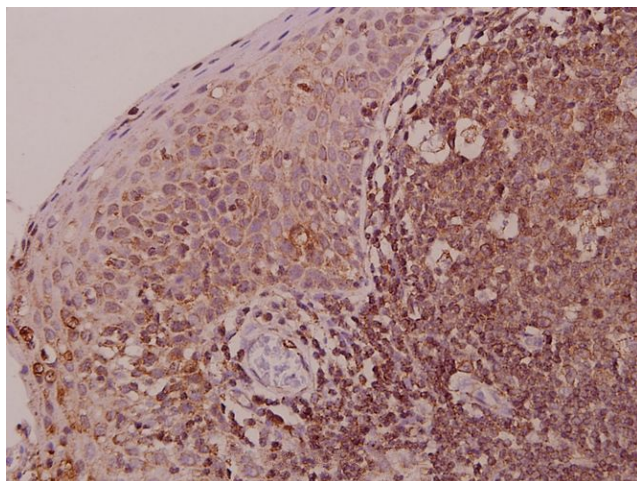
**Synonyms:** BHLHC4; bHLHc4; Class C basic helix-loop-helix protein 4; MRF4; Muscle-specific regulatory factor 4; Myf-6; MYF6; Myogenic factor 6

**Note:** For research use only, not for use in diagnostic procedure.

**Product images:**



Western blot (WB) analysis of Myf-6 (R150) pAb at 1:1000 dilution Lane1:THP-1 whole cell lysate(40ug) Lane2:MG63 whole cell lysate(20ug) Lane3:PC3 whole cell lysate(10ug) Lane4:H9C2 whole cell lysate(40ug) Lane5:SP2/0 whole cell lysate(20ug)



Immunohistochemistry (IHC) analyzes of Myf-6 (R150) pAb in paraffin-embedded human tonsil carcinoma tissue at 1:50.