

## Product datasheet for **TA392735S**

### ELK1 Rabbit Polyclonal Antibody

#### Product data:

Product Type:	Primary Antibodies
Applications:	WB
Recommended Dilution:	WB: 1:500~1:1000 IHC: 1:50~1:200
Reactivity:	Human, Mouse, Rat
Host:	Rabbit
Isotype:	IgG
Clonality:	Polyclonal
Immunogen:	Synthetic peptide, corresponding to the N-terminus of Human Elk-1.
Specificity:	Elk-1 (E33) polyclonal antibody detects endogenous levels of Elk-1 protein.
Formulation:	Rabbit IgG, 1mg/ml in PBS with 0.02% sodium azide, 50% glycerol, pH7.2
Concentration:	1mg/ml
Conjugation:	Unconjugated
Storage:	Store at 4°C short term. Aliquot and store at -20°C long term. Avoid freeze-thaw cycles.
Stability:	1 year
Predicted Protein Size:	~ 45 kDa
Gene Name:	ELK1, ETS transcription factor
Database Link:	<a href="#">Entrez Gene 2002 Human P19419</a>
Background:	Ets-1 is the prototype member of a family of genes identified on the basis of homology to the v-Ets oncogene isolated from the E26 erythroblastosis virus. This family of genes currently includes Ets-1, Ets-2, Erg-1-3, Elk-1, Elf-1, Elf-5, NERF, PU.1, PEA3, ERM, FEV, ER8I, Fli-1, TEL, Spi-B, ESE-1, ESE-3A, Net, ABT1 and ERF. Members of the Ets gene family exhibit varied patterns of tissue expression, and share a highly conserved carboxy-terminal domain containing a sequence related to the SV40 large T antigen nuclear localization signal sequence. This conserved domain is essential for Ets-1 binding to DNA and is likely to be responsible for the DNA binding activity of all members of the Ets gene family. Several of these proteins have been shown to recognize similar motifs in DNA that share a centrally located 5'-GGAA-3' element.

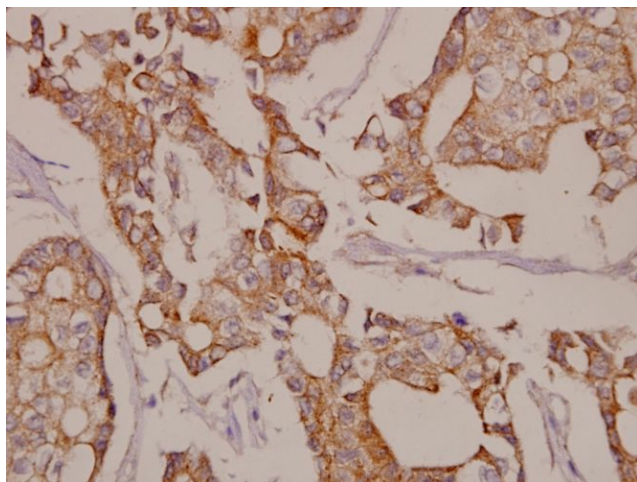


[View online »](#)

**Synonyms:** ELK 1; Elk1; ELK1 member of ETS oncogene family; ELK1 protein; ELK2 member of ETS oncogene family; ETS domain-containing protein Elk-1; ETS domain containing protein Elk 1; ETS domain containing protein Elk1; ETS domain protein Elk1; ETS like gene 1; Member of ETS oncogene family; Oncogene Elk1; Tyrosine kinase (ELK1) oncogene

**Note:** For research use only, not for use in diagnostic procedure.

**Product images:**



Immunohistochemistry (IHC) analyzes of Elk-1 (E33) pAb in paraffin-embedded human breast carcinoma tissue at 1:50.