

Product datasheet for **TA392733S**

Rabbit Polyclonal Antibody

Product data:

Product Type:	Primary Antibodies
Applications:	WB
Recommended Dilution:	WB: 1:500~1:1000 IHC: 1:50~1:200
Reactivity:	Human, Mouse, Rat
Host:	Rabbit
Isotype:	IgG
Clonality:	Polyclonal
Immunogen:	Synthetic peptide, corresponding to amino acids 580-630 of Human TCF-4.
Specificity:	TCF-4/12 (S616) polyclonal antibody detects endogenous levels of TCF-4, and also detects TCF-12 protein.
Formulation:	Rabbit IgG, 1mg/ml in PBS with 0.02% sodium azide, 50% glycerol, pH7.2
Concentration:	1mg/ml
Conjugation:	Unconjugated
Storage:	Store at 4°C short term. Aliquot and store at -20°C long term. Avoid freeze-thaw cycles.
Stability:	1 year
Predicted Protein Size:	~ 60, 72 kDa
Database Link:	P15884/Q99081
Background:	T cell factors (TCFs) comprise a family of DNA-binding transcriptional activators that are essential for lymphoid cell development. These transcription factors are activated by the Wnt-1 and Wingless pathways and are characterized by the presence of a conserved protein motif, the high mobility group (HMG) 1 box, which mediates DNA binding. TCF-4 mainly localizes in the cytoplasm and is transported into the nucleus directly bound to β -catenin in a cooperative manner. This TCF-4/ β -catenin complex induces expression of Wnt target genes, including multiple cancer-associated genes.



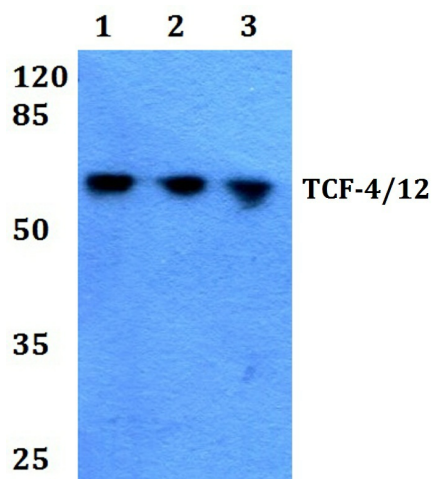
[View online »](#)

Synonyms:

BHLHB19; bHLHb19; BHLHB20; bHLHb20; Class B basic helix-loop-helix protein 19; Class B basic helix-loop-helix protein 20; DNA-binding protein HTF4; E-box-binding protein; HEB; HTF4; Immunoglobulin transcription factor 2; ITF-2; ITF2; SEF-2; SEF2; SL3-3 enhancer factor 2; TCF-4; TCF-12; TCF4; TCF12; Transcription factor 4; Transcription factor 12; Transcription factor HTF-4

Note:

For research use only, not for use in diagnostic procedure.

Product images:


Western blot (WB) analysis of TCF-4/12 (S616) pAb at 1:500 dilution Lane1:SGC7901 whole cell lysate(20ug) Lane2:HepG2 whole cell lysate(40ug) Lane3:Jurkat whole cell lysate(40ug) Lane4:A549 whole cell lysate(40ug) Lane5:PMVEC whole cell lysate(40ug) Lane6:AML-12 whole cell lysate(40ug)