

Product datasheet for **TA392732S**

FRA1 (FOSL1) Rabbit Polyclonal Antibody

Product data:

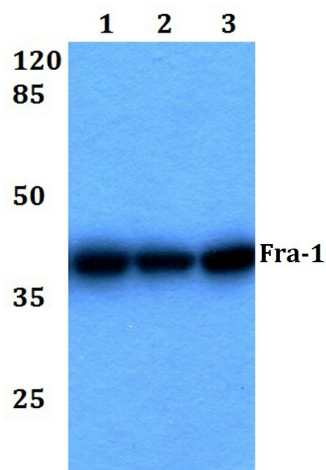
| | |
|-------------------------|--|
| Product Type: | Primary Antibodies |
| Applications: | WB |
| Recommended Dilution: | WB: 1:500~1:1000 IHC: 1:50~1:200 |
| Reactivity: | Human, Mouse, Rat |
| Host: | Rabbit |
| Isotype: | IgG |
| Clonality: | Polyclonal |
| Immunogen: | Synthetic peptide, corresponding to amino acids 100-150 of Human Fra-1. |
| Specificity: | Fra-1 (D134) polyclonal antibody detects endogenous levels of Fra-1 protein. |
| Formulation: | Rabbit IgG, 1mg/ml in PBS with 0.02% sodium azide, 50% glycerol, pH7.2 |
| Concentration: | 1mg/ml |
| Conjugation: | Unconjugated |
| Storage: | Store at 4°C short term. Aliquot and store at -20°C long term. Avoid freeze-thaw cycles. |
| Stability: | 1 year |
| Predicted Protein Size: | ~ 30, 42 kDa |
| Gene Name: | FOS like 1, AP-1 transcription factor subunit |
| Database Link: | Entrez Gene 8061 Human P15407 |
| Background: | The v-Fos oncogene was initially detected in two independent murine osteosarcoma virus isolates and an avian nephroblastoma virus. Members of the c-Fos gene family, including c-Fos, Fos B, Fra-1 and Fra-2, encode nuclear phosphoproteins that are rapidly and transiently induced by a variety of agents and function as transcriptional regulators for several genes. In contrast to c-Jun proteins, which form homo- and heterodimers that bind to specific DNA response elements, c-Fos proteins are only active as heterodimers with members of the Jun gene family. In addition, selected ATF/CREB family members can form leucine zipper dimers with Fos and Jun. Different dimers exhibit differential specificity and affinity for AP-1 and CRE sites. |
| Synonyms: | Fos-related antigen 1; FOSL1; FRA-1; FRA1 |



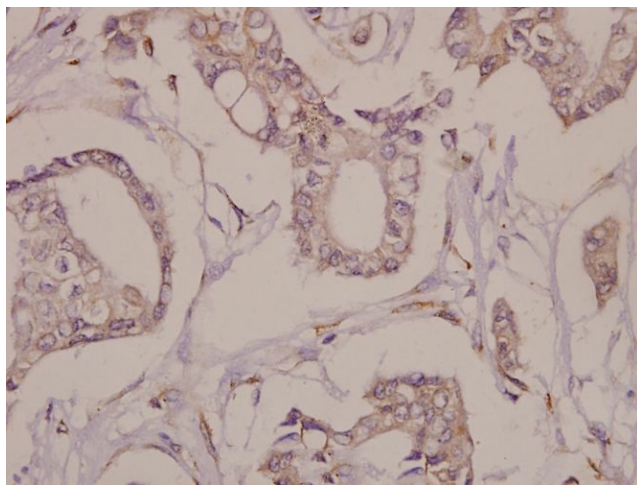
[View online »](#)

Note: For research use only, not for use in diagnostic procedure.

Product images:



Western blot (WB) analysis of Fra-1 (D134) pAb at 1:500 dilution Lane1:PC3 whole cell lysate(40ug) Lane2:HepG2 whole cell lysate(40ug) Lane3:The Brain tissue lysate of Mouse(40ug) Lane4:PC12 whole cell lysate(40ug)



Immunohistochemistry (IHC) analyzes of Fra-1 (D134) pAb in paraffin-embedded human breast carcinoma tissue at 1:50.