

Product datasheet for **TA392731**

ZNF875 Rabbit Polyclonal Antibody

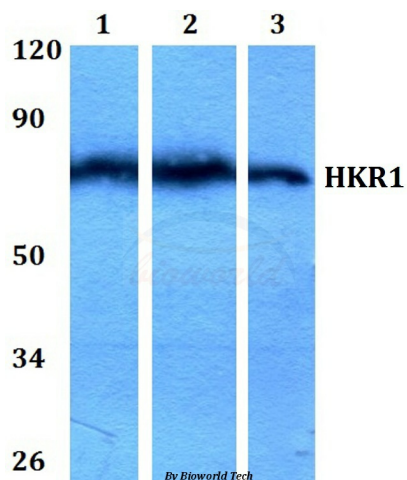
Product data:

Product Type:	Primary Antibodies
Applications:	WB
Recommended Dilution:	WB: 1:500~1:1000 IHC: 1:50~1:200
Host:	Rabbit
Isotype:	IgG
Clonality:	Polyclonal
Immunogen:	Synthetic peptide, corresponding to amino acids 111-160 of Human HKR1.
Specificity:	HKR1 (W154) polyclonal antibody detects endogenous levels of HKR1 protein.
Formulation:	Rabbit IgG, 1mg/ml in PBS with 0.02% sodium azide, 50% glycerol, pH7.2
Concentration:	1mg/ml
Conjugation:	Unconjugated
Storage:	Store at 4°C short term. Aliquot and store at -20°C long term. Avoid freeze-thaw cycles.
Stability:	1 year
Predicted Protein Size:	~ 73 kDa
Gene Name:	HKR1, GLI-Kruppel zinc finger family member
Database Link:	P10072
Background:	Zinc-finger proteins contain DNA-binding domains and have a wide variety of functions, most of which encompass some form of transcriptional activation or repression. The majority of zinc-finger proteins contain a Krueppel-type DNA binding domain and a KRAB domain, which is thought to interact with KAP1, thereby recruiting histone modifying proteins. HKR1, also known as Krueppel-related zinc finger protein 1 or zinc finger protein 875, is a 659 amino acid nuclear protein that is thought to play a role in transcriptional regulation. Existing as two alternatively spliced isoforms, HKR1 is a member of the Krueppel C2H2-type zinc-finger protein family and contains thirteen C2H2-type zinc fingers and one KRAB domain. The gene encoding HKR1 maps to human chromosome 19q13.12.
Synonyms:	HKR1; Krueppel-related zinc finger protein 1; Protein HKR1; Zinc finger protein 875; ZNF875
Note:	For research use only, not for use in diagnostic procedure.

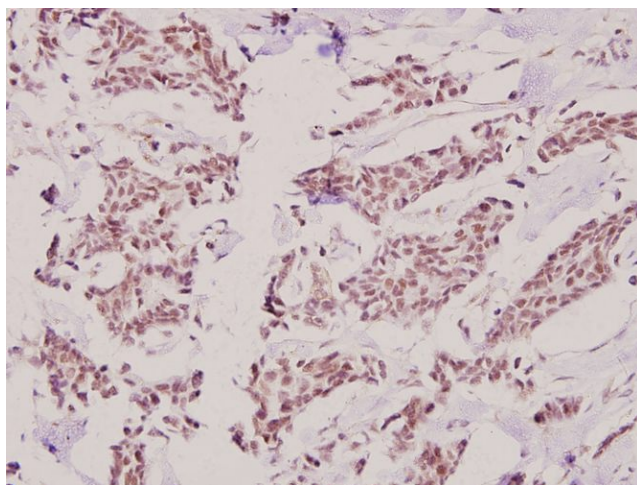


[View online »](#)

Product images:



Western blot (WB) analysis of HKR1 (W154) pAb at 1:1000 dilution Lane1:HEK293T whole cell lysate(20ug) Lane2:A549 whole cell lysate(40ug) Lane3:PC3 whole cell lysate(40ug)



Immunohistochemistry (IHC) analyzes of HKR1 (W154) pAb in paraffin-embedded human breast carcinoma tissue at 1:100.