

## Product datasheet for **TA392730S**

### HEXB Rabbit Polyclonal Antibody

#### Product data:

Product Type:	Primary Antibodies
Applications:	WB
Recommended Dilution:	WB: 1:500~1:1000 IHC: 1:50~1:200
Reactivity:	Human
Host:	Rabbit
Isotype:	IgG
Clonality:	Polyclonal
Immunogen:	Synthetic peptide, corresponding to amino acids 481-530 of Human Hexb.
Specificity:	Hexb (S516) polyclonal antibody detects endogenous levels of Hexb protein.
Formulation:	Rabbit IgG, 1mg/ml in PBS with 0.02% sodium azide, 50% glycerol, pH7.2
Concentration:	1mg/ml
Conjugation:	Unconjugated
Storage:	Store at 4°C short term. Aliquot and store at -20°C long term. Avoid freeze-thaw cycles.
Stability:	1 year
Predicted Protein Size:	~ 63 kDa
Gene Name:	hexosaminidase subunit beta
Database Link:	<a href="#">Entrez Gene 3074 Human P07686</a>
Background:	Hexosaminidase B (HEXB), also designated beta-hexosaminidase B, is a Hexosaminidase B (HEXB), also designated b-hexosaminidase B, is a tetramer of two b-A and two b-B chains and is found in the lysosomes of cells. Sandhoff disease (SD), also known as GM2-gangliosidosis type II, is caused by mutations in the HEXB gene that affect the b subunit. These mutations disrupt the activity of HEXB and HEXA, which prevents the breakdown of GM2 ganglioside, a fatty material found in the brain, thereby rendering both the HEXA and HEXB enzymes deficient. SD is a rare autosomal recessive disorder characterized by an accumulation of GM2 ganglioside, which causes progressive destruction of the central nervous system. Sandhoff disease is similar to Tay-Sachs disease, which is caused by mutations in the HEXA gene, although SD is more severe.

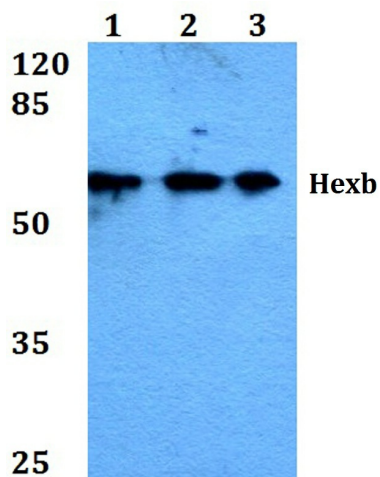


[View online »](#)

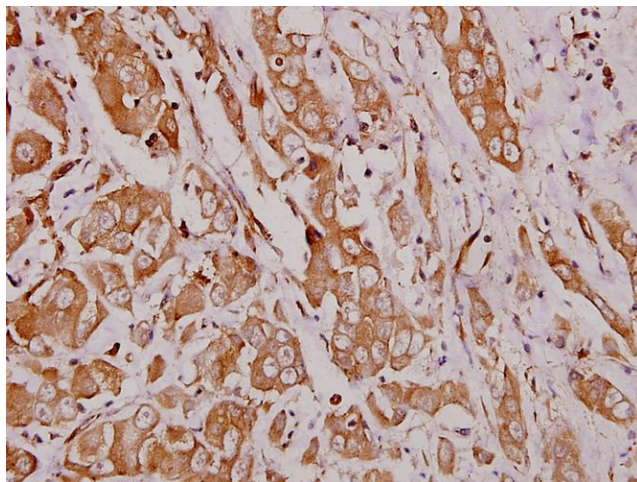
**Synonyms:** Beta-hexosaminidase subunit beta; Beta-N-acetylhexosaminidase subunit beta; Cervical cancer proto-oncogene 7 protein; HCC-7; HCC7; HEXB; Hexosaminidase subunit B; N-acetyl-beta-glucosaminidase subunit beta

**Note:** For research use only, not for use in diagnostic procedure.

**Product images:**



Western blot (WB) analysis of Hexb (S516) pAb at 1:500 dilution Lane1:A549 whole cell lysate(40ug) Lane2:MCF-7 whole cell lysate(40ug) Lane3:U-87MG whole cell lysate(40ug)



Immunohistochemistry (IHC) analyzes of Hexb (S516) pAb in paraffin-embedded human breast carcinoma tissue at 1:100.