

## Product datasheet for TA392729M

### CDK1 Rabbit Polyclonal Antibody

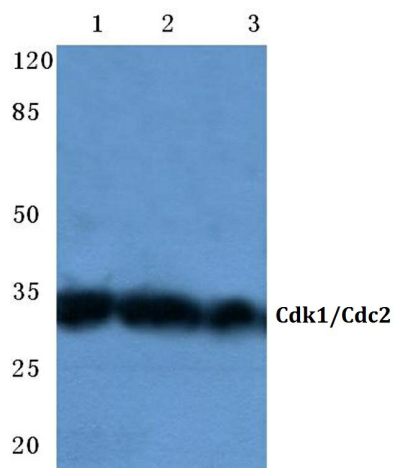
#### Product data:

Product Type:	Primary Antibodies
Applications:	WB
Recommended Dilution:	WB: 1:500~1:1000 IHC: 1:50~1:200
Reactivity:	Human, Mouse, Rat
Host:	Rabbit
Isotype:	IgG
Clonality:	Polyclonal
Immunogen:	Synthetic peptide, corresponding to amino acids 771-820 of Human Cdk1/Cdc2.
Specificity:	Cdk1/Cdc2 (N133) polyclonal antibody detects endogenous levels of Cdk1/Cdc2 protein.
Formulation:	Rabbit IgG, 1mg/ml in PBS with 0.02% sodium azide, 50% glycerol, pH7.2
Concentration:	1mg/ml
Conjugation:	Unconjugated
Storage:	Store at 4°C short term. Aliquot and store at -20°C long term. Avoid freeze-thaw cycles.
Stability:	1 year
Predicted Protein Size:	~ 34 kDa
Gene Name:	cyclin-dependent kinase 1
Database Link:	<a href="#">Entrez Gene 983 Human P06493</a>
Background:	Cdc2, an evolutionarily conserved serine/threonine-specific protein kinase, is essential in the cell cycle transition from G2 to M phase. Cdc2 is regulated by association with B-type cyclins and by reversible phosphorylation. Cyclin B binding facilitates the phosphorylation of Cdc2 p34 on three regulatory sites: threonine 14, tyrosine 15, and threonine 161. In higher eukaryotes, Cdc2 is negatively regulated by phosphorylation of two residues located in the ATP-binding site, Thr 14 and Tyr 15. Cdc2 is positively regulated by the cyclin-dependent phosphorylation of Thr 161. Both phosphorylation and de-phosphorylation at Thr 161 are required for progression through the cell cycle.
Synonyms:	CDC2; CDC28A; CDK1; CDKN1; Cell division control protein 2 homolog; Cell division protein kinase 1; Cyclin-dependent kinase 1; p34 protein kinase; P34CDC2


[View online »](#)

**Note:** For research use only, not for use in diagnostic procedure.

### Product images:



Western blot (WB) analysis of Cdk1/Cdc2 (N133) pAb at 1:500 dilution Lane1:K562 whole cell lysate(40ug) Lane2:PC3 whole cell lysate(40ug) Lane3:HEK293T whole cell lysate(40ug) Lane4:The Lung tissue lysate of Rat(40ug) Lane5:3T3-L1 whole cell lysate(40ug)