

## Product datasheet for **TA392728M**

### **BAF53A (ACTL6A) Rabbit Polyclonal Antibody**

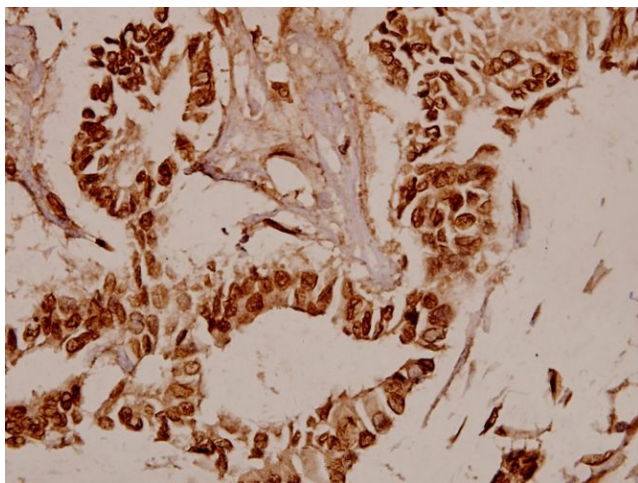
#### **Product data:**

Product Type:	Primary Antibodies
Applications:	WB
Recommended Dilution:	WB: 1:500~1:1000 IHC: 1:50~1:200
Reactivity:	Human, Mouse, Rat
Host:	Rabbit
Isotype:	IgG
Clonality:	Polyclonal
Immunogen:	Synthetic peptide, corresponding to amino acids 211-260 of Human BAF53.
Specificity:	BAF53 (W237) polyclonal antibody detects endogenous levels of BAF53 protein.
Formulation:	Rabbit IgG, 1mg/ml in PBS with 0.02% sodium azide, 50% glycerol, pH7.2
Concentration:	1mg/ml
Conjugation:	Unconjugated
Storage:	Store at 4°C short term. Aliquot and store at -20°C long term. Avoid freeze-thaw cycles.
Stability:	1 year
Predicted Protein Size:	~ 47 kDa
Gene Name:	actin like 6A
Database Link:	<a href="#">Entrez Gene 86 Human O96019</a>
Background:	The SWI/SNF complex regulates gene expression via ATP-dependent chromatin remodeling. Brm (SNF2-a), Brg-1 (SNF2-b), Ini1 (integrator interactor 1, SNF5), BAF53 (ARPN $\beta$ ), BAF57, BAF155 (SRG3), and BAF170 make up the functional core. BAF53 homologues from yeast to humans contain a conserved N-terminal motif, which contains residues at serine 2 and tyrosine 6, which play important roles in BAF53 activity. The BAF53 protein shuttles between the nucleus and cytoplasm. BAF53 also forms a complex with TIP49 and TIP48, which mediates c-Myc oncogenic activity.
Synonyms:	53 kDa BRG1-associated factor A; Actin-like protein 6A; Actin-related protein Baf53a; ACTL6A; ArpNbeta; BAF53; BAF53A; BRG1-associated factor 53A; INO80 complex subunit K; INO80K


[View online »](#)

**Note:** For research use only, not for use in diagnostic procedure.

**Product images:**



Immunohistochemistry (IHC) analyzes of BAF53 (W237) pAb in paraffin-embedded human breast carcinoma tissue at 1:50.