

## Product datasheet for **TA392726M**

### HEXIM1 Rabbit Polyclonal Antibody

#### Product data:

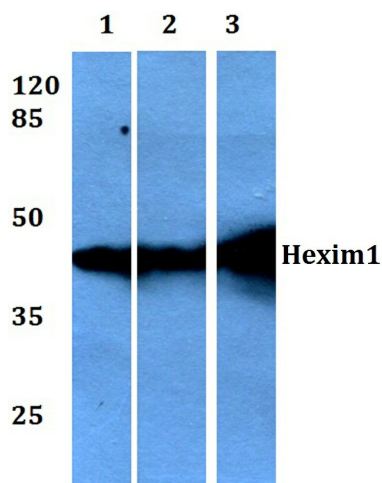
Product Type:	Primary Antibodies
Applications:	WB
Recommended Dilution:	WB: 1:500~1:1000 IHC: 1:50~1:200
Reactivity:	Human, Mouse, Rat
Host:	Rabbit
Isotype:	IgG
Clonality:	Polyclonal
Immunogen:	Synthetic peptide, corresponding to amino acids 191-240 of Human Hexim1.
Specificity:	Hexim1 (Q215) polyclonal antibody detects endogenous levels of Hexim1 protein.
Formulation:	Rabbit IgG, 1mg/ml in PBS with 0.02% sodium azide, 50% glycerol, pH7.2
Concentration:	1mg/ml
Conjugation:	Unconjugated
Storage:	Store at 4°C short term. Aliquot and store at -20°C long term. Avoid freeze-thaw cycles.
Stability:	1 year
Predicted Protein Size:	~ 41 kDa
Gene Name:	hexamethylene bis-acetamide inducible 1
Database Link:	<a href="#">Entrez Gene 10614 Human O94992</a>
Background:	Hexamethylene bis-acetamide inducible 1 (HEXIM1) and Hexamethylene bis-acetamide inducible 2 (HEXIM2) comprise a family of proteins which inhibit positive transcription elongation factor b (P-TEFb) through association with 7SK. P-TEFb is composed of a catalytic subunit, Cdk9, and either Cyclin T1 or T2 as a regulatory subunit. This complex regulates eukaryotic gene expression at the level of elongation. The C-terminal domains of HEXIM proteins interact directly with each other. Via these domains, HEXIM1 and HEXIM2 form stable homo- and hetero-oligomers, which may aid in the formation of the 7SK small nuclear ribonucleic acid particle. Despite their similar functions, HEXIM1 and HEXIM2 exhibit distinct expression patterns in various established cell lines and human tissues.

[View online »](#)

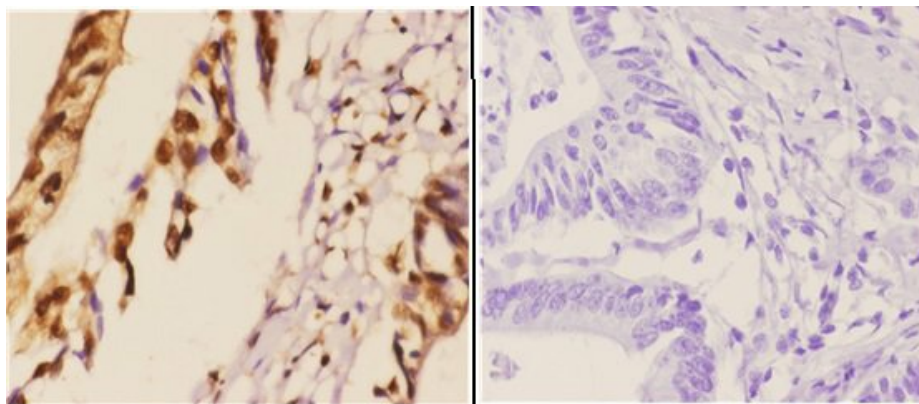
**Synonyms:** Cardiac lineage protein 1; CLP1; EDG1; Estrogen down-regulated gene 1 protein; Hexamethylene bis-acetamide-inducible protein 1; HEXIM1; HIS1; MAQ1; Menage a quatre protein 1; Protein HEXIM1

**Note:** For research use only, not for use in diagnostic procedure.

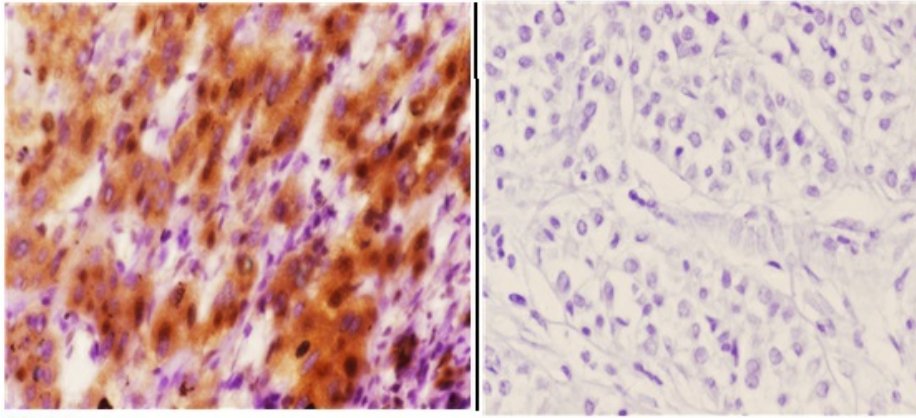
## Product images:



Western blot (WB) analysis of Hexim1 (Q215) pAb at 1:1000 dilution Lane1:A549 whole cell lysate(40ug) Lane2:HepG2 whole cell lysate(40ug) Lane3:MCF-7 whole cell lysate(40ug) Lane4:AML-12 whole cell lysate(40ug) Lane5:PMVEC whole cell lysate(40ug)

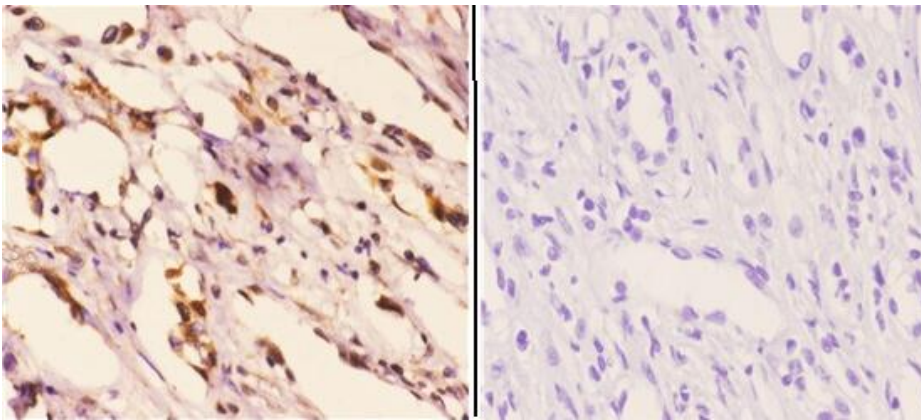


Immunohistochemistry (IHC) analyzes of Hexim1 (Q215) pAb in paraffin-embedded human colon carcinoma tissue at 1:50.showing Cytoplasm and Nucleus staining. Negative control (the right)Using PBS instead of primary antibody, secondary antibody is Goat Anti-Rabbit IgG-biotin followed by avidin-peroxidase.



Immunohistochemistry (IHC) analyzes of Hexim1 (Q215) pAb in paraffin-embedded human liver carcinoma tissue at 1:50. showing Cytoplasm and Nucleus staining. Negative control (the right) Using PBS instead of primary antibody, secondary antibody is Goat Anti-Rabbit IgG-biotin followed by avidin-peroxidase.

BS1896  
Lot CA36131



Immunohistochemistry (IHC) analyzes of Hexim1 (Q215) pAb in paraffin-embedded human liver carcinoma tissue at 1:50. showing Cytoplasm and Nucleus staining. Negative control (the right) Using PBS instead of primary antibody, secondary antibody is Goat Anti-Rabbit IgG-biotin followed by avidin-peroxidase.