

Product datasheet for **TA392725S**

FARP2 Rabbit Polyclonal Antibody

Product data:

Product Type:	Primary Antibodies
Applications:	WB
Recommended Dilution:	WB: 1:500~1:1000
Reactivity:	Human, Mouse, Rat
Host:	Rabbit
Isotype:	IgG
Clonality:	Polyclonal
Immunogen:	Synthetic peptide, corresponding to amino acids 341-390 of Human FIR.
Specificity:	FIR (P364) polyclonal antibody detects endogenous levels of FIR protein.
Formulation:	Rabbit IgG, 1mg/ml in PBS with 0.02% sodium azide, 50% glycerol, pH7.2
Concentration:	1mg/ml
Conjugation:	Unconjugated
Storage:	Store at 4°C short term. Aliquot and store at -20°C long term. Avoid freeze-thaw cycles.
Stability:	1 year
Predicted Protein Size:	~ 120 kDa
Gene Name:	FERM, ARH/RhoGEF and pleckstrin domain protein 2
Database Link:	Entrez Gene 9855 Human O94887

Background: FARP2 (FERM, RhoGEF and pleckstrin domain-containing protein 2), also known as PLEKHC3 or FERM domain including RhoGEF (FIR), is a 1,545 amino acid protein that contains one FERM domain, one DH domain and two PH domains. It exists as two alternatively spliced isoforms that are abundantly expressed in brain, lung, and testis as well as in embryonic hippocampal and cortical neurons. FARP2 functions as a Rho-guanine nucleotide exchange factor that activates RAC1 and is thought to regulate neurite remodeling of embryonic neurons. Sema3A binding to neuropilin-1 induces the dissociation of FARP2 from plexin-A1, thereby activating FARP2's Rac GEF activity which is critical for repulsion of outgrowing axons and suppression of neuronal adhesion. Downregulation of the FARP2 gene has been implicated in autism.

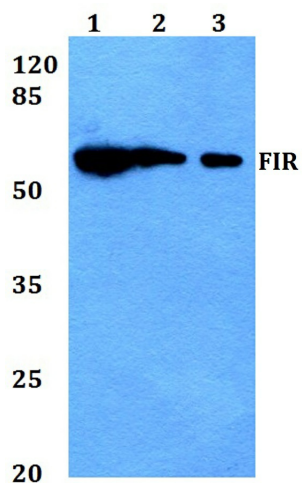


[View online »](#)

Synonyms: FARP2; FERM, RhoGEF and pleckstrin domain-containing protein 2; FERM domain including RhoGEF; FIR; KIAA0793; PH domain-containing family C member 3; Pleckstrin homology domain-containing family C member 3; PLEKHC3

Note: For research use only, not for use in diagnostic procedure.

Product images:



Western blot (WB) analysis of FIR (P364) pAb at 1:1000 dilution Lane1:SGC7901 whole cell lysate(40ug) Lane2:HEK293T whole cell lysate(40ug) Lane3:PC12 whole cell lysate(40ug) Lane4:AML-12 whole cell lysate(40ug)