

## Product datasheet for **TA392724**

### ATP6IP2 (ATP6AP2) Rabbit Polyclonal Antibody

#### Product data:

Product Type:	Primary Antibodies
Applications:	WB
Recommended Dilution:	WB: 1:500~1:1000
Reactivity:	Human, Mouse, Rat
Host:	Rabbit
Isotype:	IgG
Clonality:	Polyclonal
Immunogen:	Synthetic methylpeptide derived from human Histone H3 around the methylation site of Lysine 80.
Specificity:	Caper (R199) pAb detects endogenous levels of Caper (R199) protein.
Formulation:	Rabbit IgG, 1mg/ml in PBS with 0.02% sodium azide, 50% glycerol, pH7.2
Concentration:	1mg/ml
Conjugation:	Unconjugated
Storage:	Store at 4°C short term. Aliquot and store at -20°C long term. Avoid freeze-thaw cycles.
Stability:	1 year
Predicted Protein Size:	~ 39 kDa
Gene Name:	ATPase H+ transporting accessory protein 2
Database Link:	<a href="#">Entrez Gene 10159 Human O75787</a>
Background:	Caper, also known as splicing factor HCC1 or hepatocellular carcinoma protein 1 and RNA binding region containing protein 2 (RNPC2), acts as a transcriptional coactivator for steroid nuclear receptors c-Jun, ER $\alpha$ and ER $\beta$ . Caper, a nuclear protein with highest concentrations in nuclear speckles, plays a role in the pre-mRNA splicing process. Two isoforms of Caper, HCC1.3 and HCC1.4, co-localize with pre-mRNA splicing factor SC35 and uridine-rich small nuclear RNAs. Caper is a widely expressed protein with highest levels detected in skeletal muscle, lung, brain and pancreas.



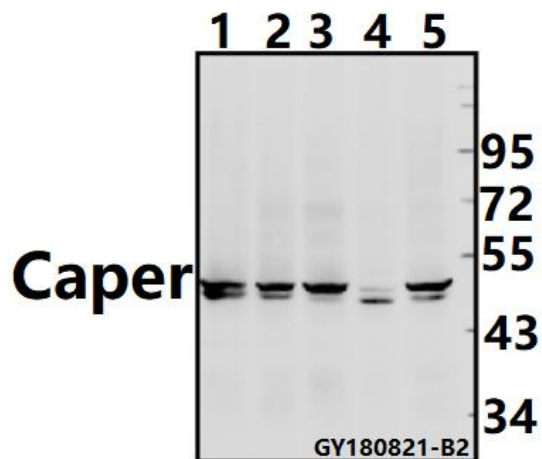
[View online »](#)

**Synonyms:**

3F3A; H3.3A; H3.3B; H3F2; H3F3; H3F3B; H3F3C; H3FA; H3FB; H3FC; H3FD; H3FF; H3FH; H3FI; H3FJ; H3FK; H3FL; H3FM; HIST1H3A; HIST1H3B; HIST1H3C; HIST1H3D; HIST1H3E; HIST1H3F; HIST1H3G; HIST1H3H; HIST1H3I; HIST1H3J; HIST2H3A; HIST2H3C; HIST2H3D; Histone H3.1; Histone H3.2; Histone H3.3; Histone H3.3C; Histone H3.5; Histone H3/a; Histone H3/b; Histone H3/c; Histone H3/d; Histone H3/f; Histone H3/h; Histone H3/i; Histone H3/j; Histone H3/k; Histone H3/l; Histone H3/m; Histone H3/o; PP781

**Note:**

For research use only, not for use in diagnostic procedure.

**Product images:**

Western blot (WB) analysis of Caper (R199) pAb at 1:500 dilution Lane1:C6 whole cell lysate(40ug) Lane2:3T3-L1 whole cell lysate(40ug) Lane3:HepG2 whole cell lysate(40ug) Lane4:U-87MG whole cell lysate(40ug) Lane5:HEK293T whole cell lysate(40ug)