

## Product datasheet for **TA392722**

### MAST3 Rabbit Polyclonal Antibody

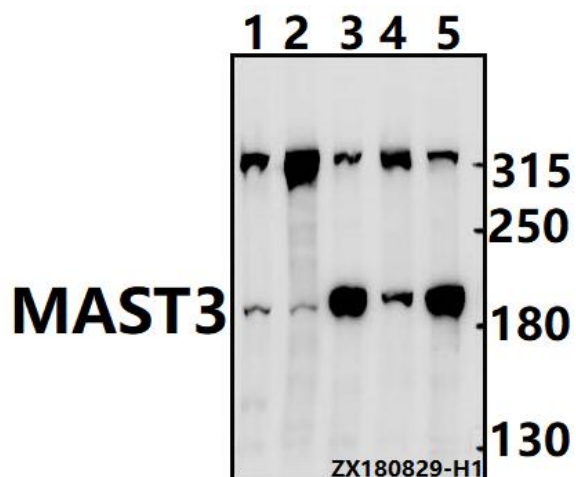
#### Product data:

Product Type:	Primary Antibodies
Applications:	WB
Recommended Dilution:	WB: 1:500~1:1000
Reactivity:	Human, Mouse, Rat
Host:	Rabbit
Isotype:	IgG
Clonality:	Polyclonal
Immunogen:	Synthetic peptide, corresponding Human RPS27L.
Specificity:	MAST3 (R1065) pAb detects endogenous levels of MAST3 protein.
Formulation:	Rabbit IgG, 1mg/ml in PBS with 0.02% sodium azide, 50% glycerol, pH7.2
Concentration:	1mg/ml
Conjugation:	Unconjugated
Storage:	Store at 4°C short term. Aliquot and store at -20°C long term. Avoid freeze-thaw cycles.
Stability:	1 year
Predicted Protein Size:	~ 143 kDa
Gene Name:	microtubule associated serine/threonine kinase 3
Database Link:	<a href="#">Entrez Gene 23031 Human O60307</a>
Background:	MAST3, also named as KIAA0561, belongs to the protein kinase superfamily and AGC Ser/Thr protein kinase family. MAST3 in antigen-presenting cells and in lymphocytes. The knockdown of MAST3 specifically decreased Toll-like receptor-4-dependent NF-kappaB activity.
Synonyms:	40S ribosomal protein S27-like; RPS27L; Small ribosomal subunit protein eS27-like
Note:	For research use only, not for use in diagnostic procedure.



[View online »](#)

## Product images:



Western blot (WB) analysis of MAST3 ([R1065]) pAb at 1:500 dilution Lane1:CT26 whole cell lysate(40ug) Lane2:PC12 whole cell lysate(40ug) Lane3:HEK293T whole cell lysate(40ug) Lane4:A375 whole cell lysate(40ug) Lane5:HCT116 whole cell lysate(40ug)