

## Product datasheet for **TA392720M**

### AKAP10 Rabbit Polyclonal Antibody

#### Product data:

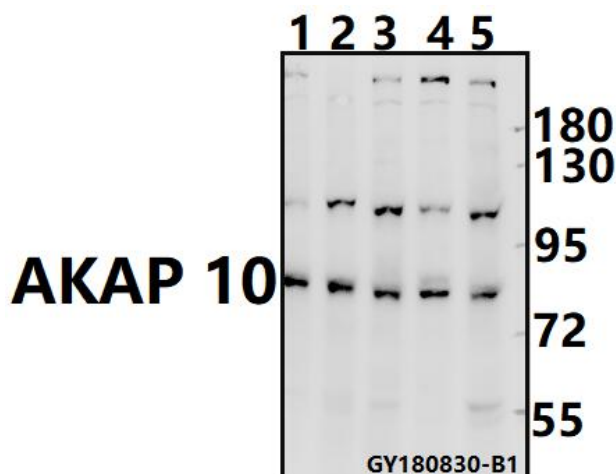
Product Type:	Primary Antibodies
Applications:	WB
Recommended Dilution:	WB: 1:500~1:1000 IHC: 1:50~1:200
Reactivity:	Human
Host:	Rabbit
Isotype:	IgG
Clonality:	Polyclonal
Immunogen:	Synthetic peptide, corresponding to amino acids 1-50 of Human AKAP 10.
Specificity:	AKAP 10 (R27) polyclonal antibody detects endogenous levels of AKAP 10 protein.
Formulation:	Rabbit IgG, 1mg/ml in PBS with 0.02% sodium azide, 50% glycerol, pH7.2
Concentration:	1mg/ml
Conjugation:	Unconjugated
Storage:	Store at 4°C short term. Aliquot and store at -20°C long term. Avoid freeze-thaw cycles.
Stability:	1 year
Predicted Protein Size:	~ 74 kDa
Gene Name:	A-kinase anchoring protein 10
Database Link:	<a href="#">Entrez Gene 11216 Human O43572</a>
Background:	AKAP 10 (A kinase anchor protein 10), also known as PRKA10 or D-AKAP2 (dual-specific A kinase-anchoring protein 2), is a 662 amino acid mitochondrial membrane protein that belongs to the AKAP family. AKAP 10 is a dual specificity protein that binds to both type I and type II regulatory subunits of PKA and anchors them to the plasma membrane or the mitochondria. When anchored to the mitochondria, PKA can phosphorylate and, thus, inactivate the proapoptotic protein Bad. This suggests that AKAP 10 indirectly regulates Bad-induced apoptosis by mediating the mitochondrial attachment of PKA. Additionally, AKAP 10 may facilitate G-protein coupled signal transduction and could act as an adaptor in the assembly of multiprotein complexes.


[View online »](#)

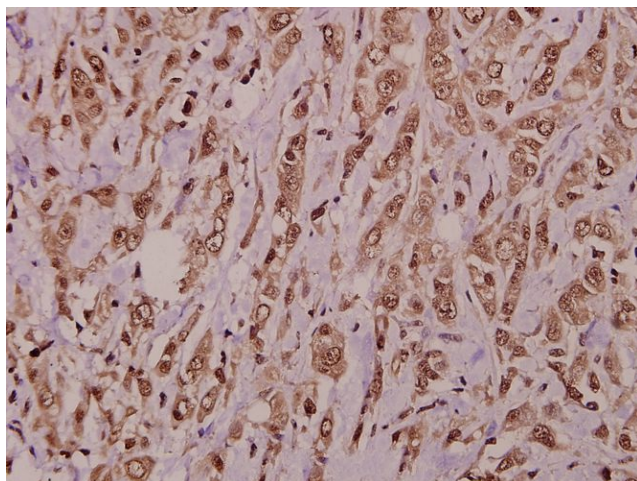
**Synonyms:** A-kinase anchor protein 10, mitochondrial; AKAP-10; AKAP10; D-AKAP-2; Dual specificity A kinase-anchoring protein 2; PRKA10; Protein kinase A-anchoring protein 10

**Note:** For research use only, not for use in diagnostic procedure.

**Product images:**



Western blot (WB) analysis of AKAP 10 (R27) pAb at 1:500 dilution Lane1:PC3 whole cell lysate(40ug) Lane2:SGC7901 whole cell lysate(40ug) Lane3:HCT116 whole cell lysate(40ug) Lane4:Panc1 whole cell lysate(40ug) Lane5:HEK293T whole cell lysate(40ug)



Immunohistochemistry (IHC) analyzes of AKAP 10 (R27) pAb in paraffin-embedded human colorectal carcinoma tissue at 1:50.