

## Product datasheet for **TA392717M**

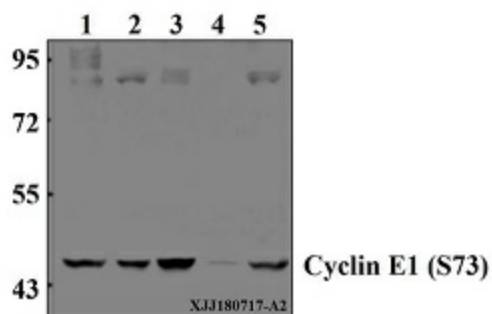
### Cyclin E1 (CCNE1) Rabbit Polyclonal Antibody

#### Product data:

Product Type:	Primary Antibodies
Applications:	WB
Recommended Dilution:	WB: 1:500~1:1000
Reactivity:	Human, Mouse, Rat
Host:	Rabbit
Isotype:	IgG
Clonality:	Polyclonal
Immunogen:	Synthetic peptide, corresponding to amino acids 360-400 of Human Cyclin E1.
Specificity:	Cyclin E1 (L389) polyclonal antibody detects endogenous levels of Cyclin E1 protein.
Formulation:	Rabbit IgG, 1mg/ml in PBS with 0.02% sodium azide, 50% glycerol, pH7.2
Concentration:	1mg/ml
Conjugation:	Unconjugated
Storage:	Store at 4°C short term. Aliquot and store at -20°C long term. Avoid freeze-thaw cycles.
Stability:	1 year
Predicted Protein Size:	~ 48 kDa
Gene Name:	cyclin E1
Database Link:	<a href="#">Entrez Gene 898 Human P24864</a>
Background:	Cyclins were first identified in invertebrates as proteins that oscillate dramatically through the cell cycle. These proteins have been well conserved through evolution and play a critical role in regulation of cell division. cyclin E, along with the three cyclin D proteins and cyclin C, has been shown to represent a putative G1 cyclin on the basis of its cyclic pattern of mRNA expression, with maximal levels being detected near the G1/S boundary. cyclin E has been found to be associated with the transcription factor E2F in a temporally regulated manner.
Synonyms:	CCNE; CCNE1; G1/S-specific cyclin-E1
Note:	For research use only, not for use in diagnostic procedure.


[View online »](#)

## Product images:



Western blot (WB) analysis of Cyclin E1 (S73) pAb at 1:500 dilution Lane1:HEK293T whole cell lysate(40µg) Lane2:MCF-7 whole cell lysate(40µg) Lane3:Myla2059 whole cell lysate(40µg) Lane4:The testis tissue lysate of Rat(40µg) Lane5:CT-26 whole cell lysate(40µg)