

## Product datasheet for **TA392716S**

### Aquaporin 2 (AQP2) Rabbit Polyclonal Antibody

#### Product data:

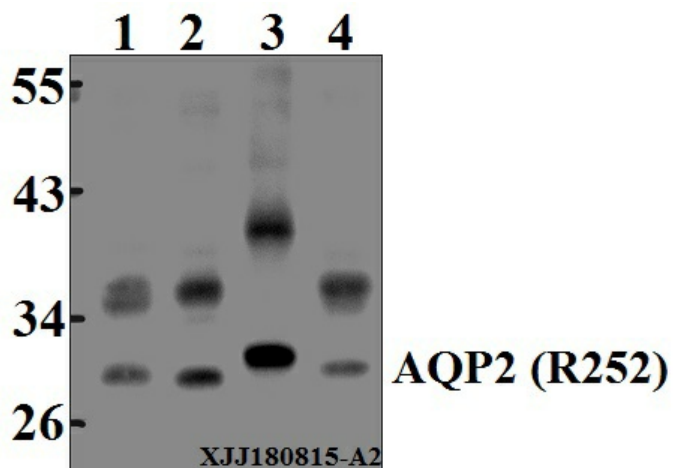
|                         |  |
|-------------------------|--|
| Product Type:           | Primary Antibodies   |
| Applications:           | WB   |
| Recommended Dilution:   | WB: 1:500~1:1000 IHC: 1:50~1:200   |
| Reactivity:             | Human, Mouse, Rat  |
| Host:                   | Rabbit   |
| Isotype:                | IgG  |
| Clonality:              | Polyclonal   |
| Immunogen:              | Synthetic peptide, corresponding to amino acids 230-280 of Human AQP2.   |
| Specificity:            | AQP2 (R252) polyclonal antibody detects endogenous levels of AQP2 protein.   |
| Formulation:            | Rabbit IgG, 1mg/ml in PBS with 0.02% sodium azide, 50% glycerol, pH7.2   |
| Concentration:          | 1mg/ml   |
| Conjugation:            | Unconjugated   |
| Storage:                | Store at 4°C short term. Aliquot and store at -20°C long term. Avoid freeze-thaw cycles.   |
| Stability:              | 1 year   |
| Predicted Protein Size: | ~ 26 kDa   |
| Gene Name:              | aquaporin 2  |
| Database Link:          | <a href="#">Entrez Gene 359 Human P41181</a>   |
| Background:             | Many isoforms of aquaporin have been identified in mammals, designated AQP0 through AQP10. Aquaporins are widely distributed and it is not uncommon for more than one type of AQP to be present in the same cell. Although most aquaporins are only permeable to water, AQP3, AQP7, AQP9 and one of the two AQP10 transcripts are also permeable to urea and glycerol. AQP2 is the only water channel that is activated by vasopressin to enhance water reabsorption in the kidney collecting duct. Aquaporins are involved in renal water absorption, generation of pulmonary secretions, lacrimation, and the secretion and reabsorption of cerebrospinal fluid and aqueous humor. |
| Synonyms:               | ADH water channel; AQP-2; AQP-CD; AQP2; Aquaporin-2; Aquaporin-CD; Collecting duct water channel protein; Water channel protein for renal collecting duct; WCH-CD  |



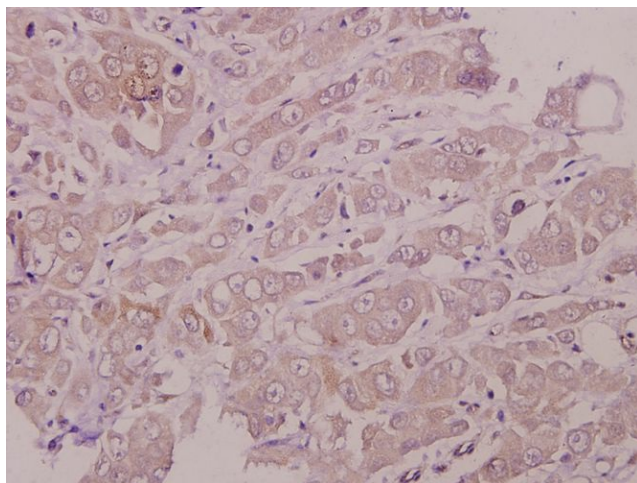
[View online »](#)

Note: For research use only, not for use in diagnostic procedure.

### Product images:



Western blot (WB) analysis of AQP2 (R252) pAb at 1:500 dilution Lane1:HEK293T whole cell lysate(40µg) Lane2:HeLa whole cell lysate(40µg) Lane3:The Kidney tissue lysate of Rat(40µg) Lane4:CT-26 whole cell lysate(40µg)



Immunohistochemistry (IHC) analyzes of AQP2 (R252) pAb in paraffin-embedded human colorectal carcinoma tissue at 1:50.