

Product datasheet for **TA392715M**

GAB1 Rabbit Polyclonal Antibody

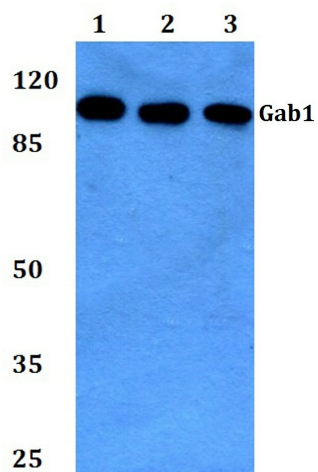
Product data:

Product Type:	Primary Antibodies
Applications:	WB
Recommended Dilution:	WB: 1:500~1:1000 IHC: 1:50~1:200 IF: 1:50~1:200
Reactivity:	Human, Mouse, Rat
Host:	Rabbit
Isotype:	IgG
Clonality:	Polyclonal
Immunogen:	Synthetic peptide, corresponding to amino acids 622-672 of Human Gab1.
Specificity:	Gab1 (E655) polyclonal antibody detects endogenous levels of Gab1 protein.
Formulation:	Rabbit IgG, 1mg/ml in PBS with 0.02% sodium azide, 50% glycerol, pH7.2
Concentration:	1mg/ml
Conjugation:	Unconjugated
Storage:	Store at 4°C short term. Aliquot and store at -20°C long term. Avoid freeze-thaw cycles.
Stability:	1 year
Predicted Protein Size:	~ 76, 110 kDa
Gene Name:	GRB2 associated binding protein 1
Database Link:	Entrez Gene 2549 Human Q13480
Background:	Gab 1 (GRB2-associated binder 1), one such member of the IRS family, plays an important role in cellular growth response, transformation and apoptosis. Gab 1 is a multi-substrate docking protein that functions downstream in the signaling pathways of different receptor kinases, including EGFR. Gab1 is tyrosine phosphorylated normally in response to insulin and consequently enhances phosphatidylinositol 3- kinase (PI3K) binding. In response to osmotic shock, tyrosine-phosphorylated Gab 1 (p-Gab 1) also binds and activates phosphatidylinositol 3-kinase, suggesting that Gab 1 is the major site for PI3K recruitment following osmotic shock stimulation.
Synonyms:	GAB1; GRB2-associated-binding protein 1; GRB2-associated binder 1; Growth factor receptor bound protein 2-associated protein 1

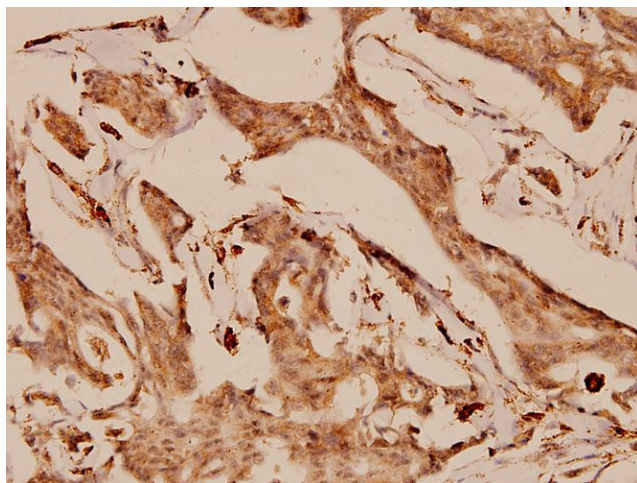

[View online »](#)

Note: For research use only, not for use in diagnostic procedure.

Product images:



Western blot (WB) analysis of Gab1 (E655) polyclonal antibody at 1:500 dilution
Lane1:HEK293T whole cell lysate Lane2:NIH-3T3 whole cell lysate Lane3:H9C2 whole cell lysate



Immunohistochemistry (IHC) analyzes of Gab1 (E655) pAb in paraffin-embedded human breast carcinoma tissue at 1:100.