

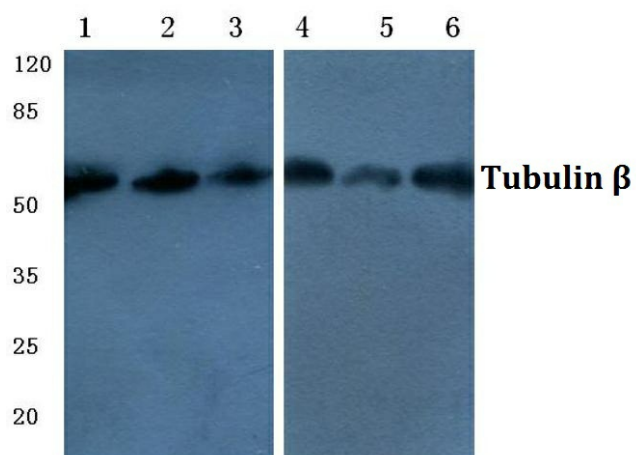
Product datasheet for **TA392714M**

Mouse Polyclonal Antibody

Product data:

Product Type:	Primary Antibodies
Applications:	WB
Recommended Dilution:	WB: 1:10000 IHC: 1:100~1:1000
Reactivity:	Human, Mouse, Rabbit, Frog, Fish, Chicken, Rat
Host:	Mouse
Isotype:	IgG
Clonality:	Polyclonal
Immunogen:	Synthetic peptide, corresponding to amino acids 402-455 of Human Tubulin β .
Specificity:	Tubulin β (4D9) mAb detects endogenous levels of β -Tubulin protein.
Formulation:	1mg/ml in PBS with 0.02% sodium azide, 50% glycerol, pH7.2
Concentration:	1mg/ml
Conjugation:	Unconjugated
Storage:	Store at 4°C short term. Aliquot and store at -20°C long term. Avoid freeze-thaw cycles.
Stability:	1 year
Predicted Protein Size:	~ 55 kDa
Database Link:	Q13509/P04350/P68371/P07437/Q13885/Q9BUF5
Background:	Microtubules are constituent parts of the mitotic apparatus, cilia, flagella, and elements of the cytoskeleton. They consist principally of 2 soluble proteins, alpha- and beta-tubulin, each of about 55,000 Da. Antibodies against beta Tubulin are useful as loading controls for Western Blotting. However it should be noted that levels of beta Tubulin may not be stable in certain cells.
Synonyms:	Total tubulin β ; Tubulin beta
Note:	For research use only, not for use in diagnostic procedure.


[View online »](#)

Product images:

Western blot (WB) analysis of Tubulin β (4D9) monoclonal antibody-HRP at 1:10000 dilution
Lane1:The Brain tissue lysate of Rat(10ug)
Lane2:The Brain tissue lysate of Mouse(10ug)
Lane3:PC12 whole cell lysate(10ug) Lane4:BV2 whole cell lysate(10ug) Lane5:A549 whole cell lysate(10ug)