

Product datasheet for **TA392713**

Mouse Polyclonal Antibody

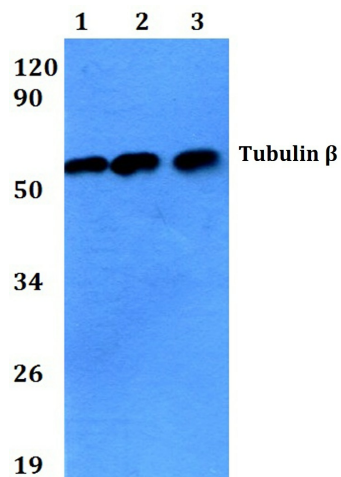
Product data:

Product Type:	Primary Antibodies
Applications:	WB
Recommended Dilution:	WB: 1:5000~20000 IHC: 1:100~500 IF: 1:100~500
Reactivity:	Human, Mouse, Rabbit, Frog, Fish, Chicken, Rat
Host:	Mouse
Isotype:	IgG
Clonality:	Polyclonal
Immunogen:	Synthetic peptide, corresponding to amino acids 402-455 of Human Tubulin β .
Specificity:	Tubulin β (4D9) mAb detects endogenous levels of β -Tubulin protein.
Formulation:	1mg/ml in PBS with 0.02% sodium azide, 50% glycerol, pH7.2
Concentration:	1mg/ml
Conjugation:	Unconjugated
Storage:	Store at 4°C short term. Aliquot and store at -20°C long term. Avoid freeze-thaw cycles.
Stability:	1 year
Predicted Protein Size:	~ 55 kDa
Database Link:	Q13509/P04350/P68371/P07437/Q13885/Q9BUF5
Background:	Microtubules are constituent parts of the mitotic apparatus, cilia, flagella, and elements of the cytoskeleton. They consist principally of 2 soluble proteins, alpha- and beta-tubulin, each of about 55,000 Da. Antibodies against beta Tubulin are useful as loading controls for Western Blotting. However it should be noted that levels of beta Tubulin may not be stable in certain cells.
Synonyms:	Total tubulin β ; Tubulin beta
Note:	For research use only, not for use in diagnostic procedure.

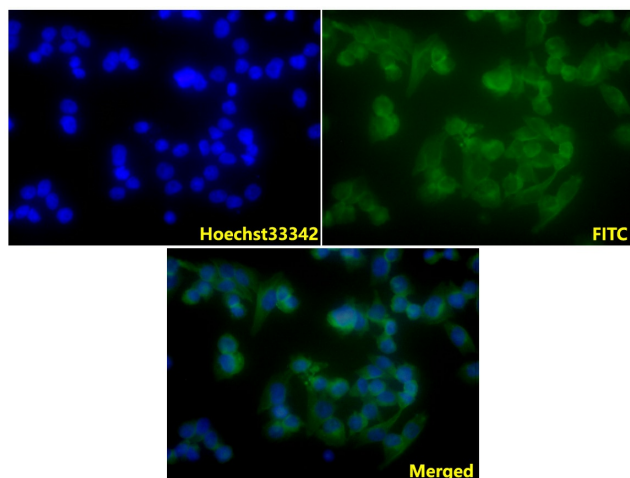


[View online »](#)

Product images:



Western blot (WB) analysis of Tubulin β (4D9) mAb at 1:5000/1:10000/1:20000 dilution
Lane 1: L02 whole cell lysate (20ug) Lane 2: NIH-3T3 whole cell lysate (20ug) Lane 3: PC12 whole cell lysate (20ug) Lane 4: The Kidney tissue lysate of Mouse (20ug)



IF image of TA392713 stained A375 cells. The cells were 4% paraformaldehyde fixed (20 min) and then incubated in 10% normal goat serum for 1h to permeabilise the cells and block non-specific protein-protein interactions. The cells were then incubated with the antibody Tubulin β (4D9) mAb #TA392713 (1:200) at 10 μ g/ml overnight at +4°C. The secondary antibody (Green) was Goat Anti-Mouse IgG (H+L) FITC #BS50950 used at a 1/400 dilution for 1h. Hoechst33342 #BD5011 was used to stain the cell nuclei (blue).