

## Product datasheet for **TA392712M**

### SGK1 Rabbit Polyclonal Antibody

#### Product data:

Product Type:	Primary Antibodies
Applications:	WB
Recommended Dilution:	WB: 1:500~1:1000 IHC: 1:50~1:200
Reactivity:	Human, Mouse, Rat
Host:	Rabbit
Isotype:	IgG
Clonality:	Polyclonal
Immunogen:	Synthetic peptide, corresponding to amino acids 391-440 of Human SGK1.
Specificity:	SGK1 (E416) polyclonal antibody detects endogenous levels of SGK1 protein
Formulation:	Rabbit IgG, 1mg/ml in PBS with 0.02% sodium azide, 50% glycerol, pH7.2
Concentration:	1mg/ml
Conjugation:	Unconjugated
Storage:	Store at 4°C short term. Aliquot and store at -20°C long term. Avoid freeze-thaw cycles.
Stability:	1 year
Predicted Protein Size:	~ 54 kDa
Gene Name:	serum/glucocorticoid regulated kinase 1
Database Link:	<a href="#">Entrez Gene 6446 Human</a> <a href="#">Q00141</a>
Background:	Serum- and glucocorticoid-regulated kinase (SGK), also known as SGK1, is a serine/threonine protein kinase and a member of the "AGC" subfamily, which includes protein kinases A, G, and C. SGK plays an important role in activating certain potassium, sodium, and chloride channels, suggesting an involvement in the regulation of processes such as cell survival, neuronal excitability, and renal sodium excretion. SGK contains a catalytic domain, which is most similar to Akt1. SGK is a downstream target of PI 3-kinase-stimulated growth factor signaling, with 3-phosphoinositide-dependent protein kinase 1 (PDK1) capable of phosphorylating the activation-loop of SGK at Threonine-256.

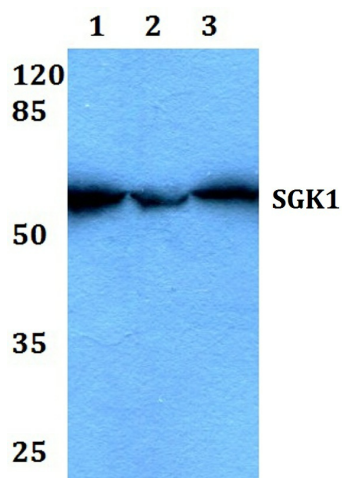


[View online »](#)

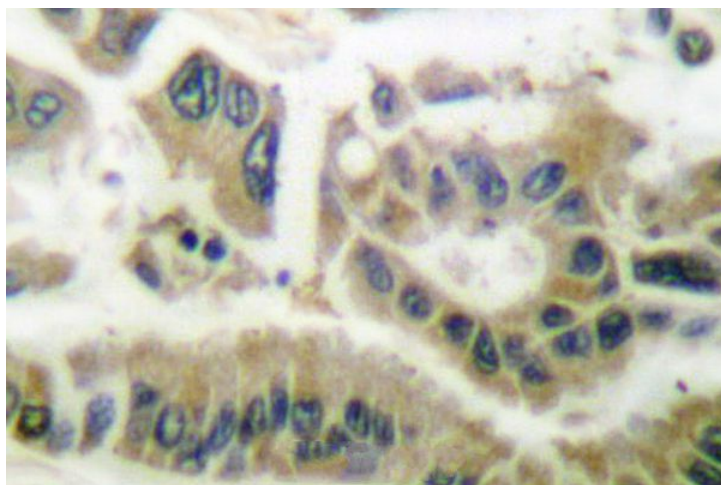
**Synonyms:** Serine/threonine-protein kinase Sgk1; Serine/threonine protein kinase SGK; Serine/threonine protein kinase Sgk1; Serum/glucocorticoid-regulated kinase 1; Serum/glucocorticoid regulated kinase; Serum/glucocorticoid regulated kinase 1; Serum and glucocorticoid regulated kinase; SGK; SGK 1; SGK1

**Note:** For research use only, not for use in diagnostic procedure.

**Product images:**



Western blot (WB) analysis of SGK1 (E416) polyclonal antibody at 1:500 dilution Lane1:L02 whole cell lysate(40ug) Lane2:HCT116 whole cell lysate(40ug) Lane3:H1792 whole cell lysate(40ug) Lane4:A549 whole cell lysate(40ug) Lane5:HEK293T whole cell lysate(40ug)



Immunohistochemistry (IHC) analyzes of SGK1 (E416) pAb in paraffin-embedded human breast carcinoma tissue.