

## Product datasheet for **TA392708**

### **PDPK1 Rabbit Polyclonal Antibody**

#### **Product data:**

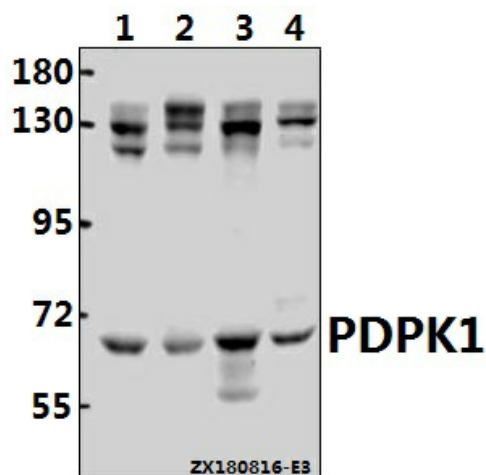
<b>Product Type:</b>	Primary Antibodies
<b>Applications:</b>	WB
<b>Recommended Dilution:</b>	WB: 1:500~1:1000 IHC: 1:50~1:200
<b>Reactivity:</b>	Human, Mouse, Rat
<b>Host:</b>	Rabbit
<b>Isotype:</b>	IgG
<b>Clonality:</b>	Polyclonal
<b>Immunogen:</b>	Synthetic peptide, corresponding to amino acids 211-260 of Human PDPK1.
<b>Specificity:</b>	PDPK1 (K235) polyclonal antibody detects endogenous levels of PDPK1 protein.
<b>Formulation:</b>	Rabbit IgG, 1mg/ml in PBS with 0.02% sodium azide, 50% glycerol, pH7.2
<b>Concentration:</b>	1mg/ml
<b>Conjugation:</b>	Unconjugated
<b>Storage:</b>	Store at 4°C short term. Aliquot and store at -20°C long term. Avoid freeze-thaw cycles.
<b>Stability:</b>	1 year
<b>Predicted Protein Size:</b>	~ 63 kDa
<b>Gene Name:</b>	3-phosphoinositide dependent protein kinase 1
<b>Database Link:</b>	<a href="#">Entrez Gene 5170 Human O15530</a>
<b>Background:</b>	PDK1 (3 Phosphoinositide Dependent Protein Kinase 1) phosphorylates AGC kinases. PDK1 activates conventional PKC and PKC zeta through phosphorylation of critical threonine residues in the activation loop. PDK1 also phosphorylates Protein Kinase B (PKB) at threonine 308 in the presence of phosphatidylinositol-3,4,5-trisphosphate. Active Akt inactivates Glycogen Synthase Kinase 3 (GSK3), eventually leading to the dephosphorylation and activation of glycogen synthase, and the stimulation of glycogen synthesis. Because of the role that PDK plays in insulin-induced glycogen synthesis and PKC activation, it is a potentially important target for metabolic drug research.
<b>Synonyms:</b>	3-phosphoinositide-dependent protein kinase 1; hPDK1; PDK1; PDPK1



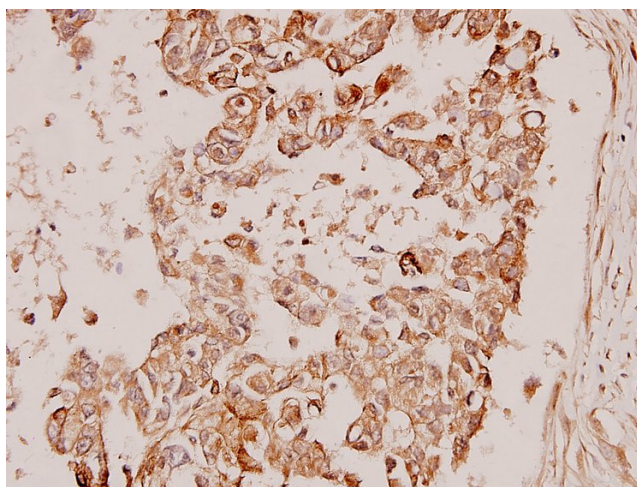
[View online »](#)

Note: For research use only, not for use in diagnostic procedure.

### Product images:



Western blot (WB) analysis of PDPK1 (K235) Antibody at 1:1000 dilution Lane1:MCF-7 whole cell lysate(40ug) Lane2:A549 whole cell lysate(40ug) Lane3:PC12 whole cell lysate(40ug) Lane4:3T3-L1 whole cell lysate(40ug)



Immunohistochemistry (IHC) analyzes of PDPK1 (K235) pAb in paraffin-embedded human breast carcinoma tissue at 1:100.